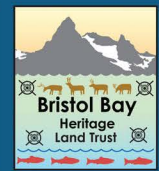
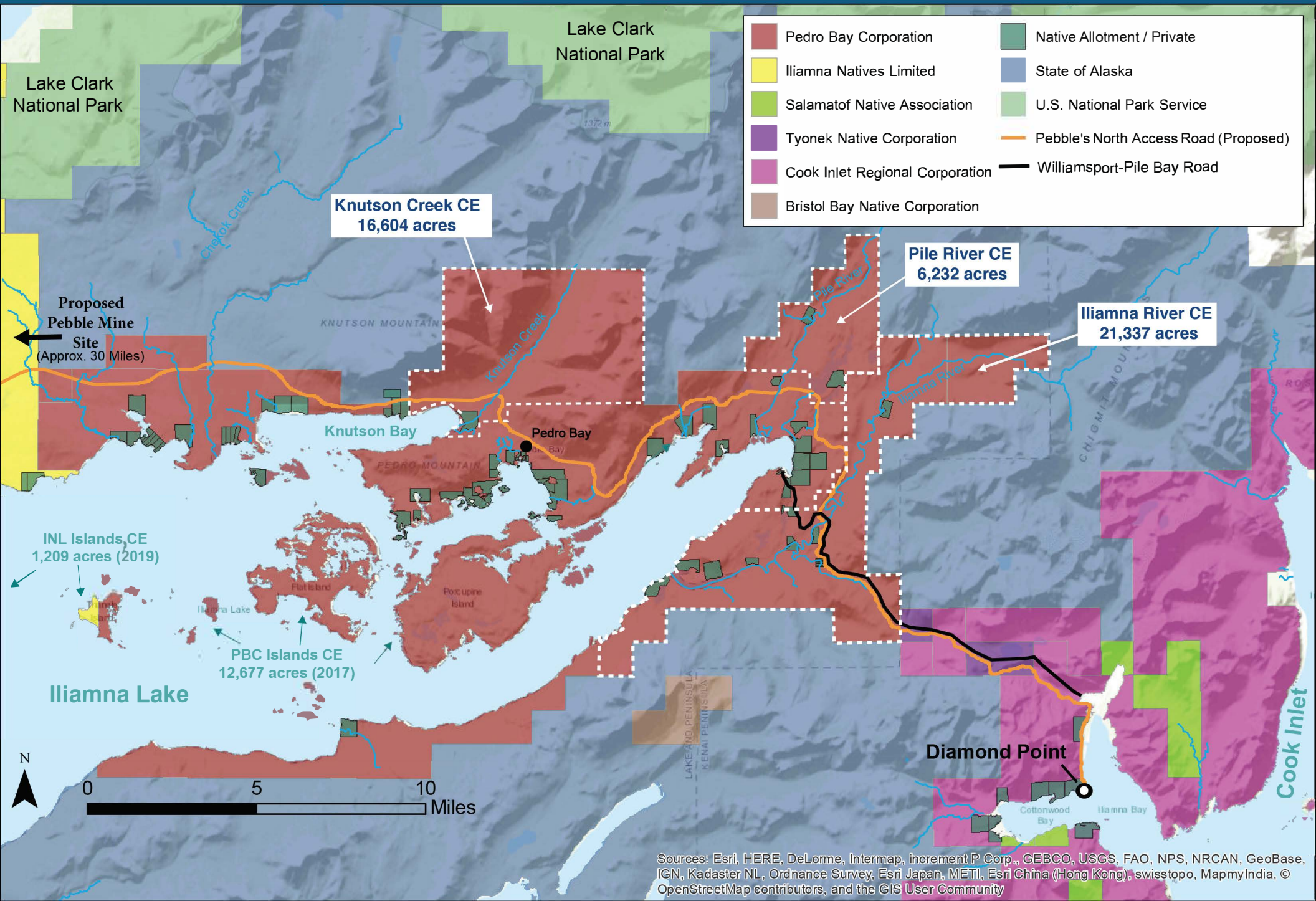


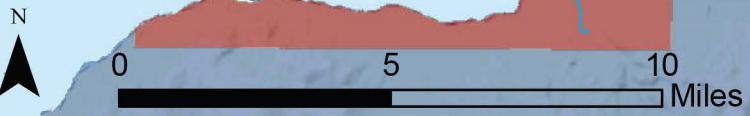
Pedro Bay Rivers Project Iliamna Lake, AK



THE CONSERVATION FUND



| | |
|--|---|
| ■ Pedro Bay Corporation | ■ Native Allotment / Private |
| ■ Iliamna Natives Limited | ■ State of Alaska |
| ■ Salamatof Native Association | ■ U.S. National Park Service |
| ■ Tyonek Native Corporation | — Pebble's North Access Road (Proposed) |
| ■ Cook Inlet Regional Corporation | — Williamsport-Pile Bay Road |
| ■ Bristol Bay Native Corporation | |



Sources: Esri, HERE, DeLorme, Intermap, increment P Corp., GEBCO, USGS, FAO, NPS, NRCAN, GeoBase, IGN, Kadaster NL, Ordnance Survey, Esri Japan, METI, Esri China (Hong Kong), swisstopo, MapmyIndia, © OpenStreetMap contributors, and the GIS User Community