

# COVERED TOPICS

Service Area in the Bank Enabling Instrument

Service Area in RIBITS

Multiple Service Areas

➤ Case Study

Service Area Considerations for Species

➤ Case Studies



# SERVICE AREA IN BANK INSTRUMENT



Giant garter snake  
Photo: USFWS

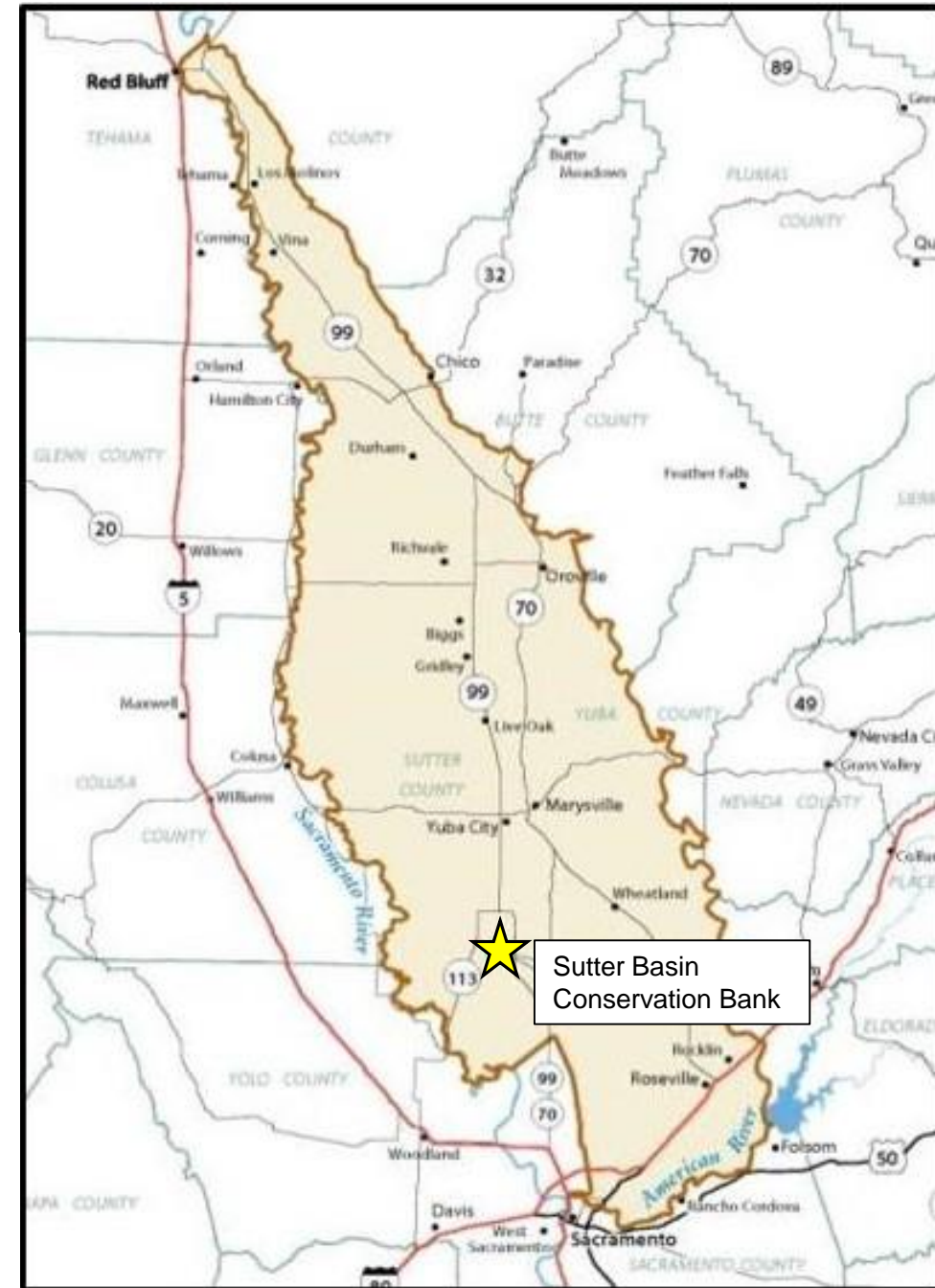
## EXHIBIT B

- Written description
- Map

### SUTTER BASIN CONSERVATION BANK SERVICE AREA

The Sutter Basin Conservation Bank service area is the giant garter snake range, east of the Sacramento River, north of the American River, encompassing portions of the Sacramento Valley and Mid Valley Recovery Units. The northern and eastern boundaries are defined as the 800 ft. elevation line.

The Natomas Basin is **EXCLUDED** from this service area. The Natomas Basin is defined by the inside toe of the levees surrounding the Basin, including the north levee of the American River, to the western levee of the Natomas East Main Drain Canal, to the southern levee of the Natomas Cross Canal, and to the eastern levee of the Sacramento River.



# SERVICE AREA IN RIBITS

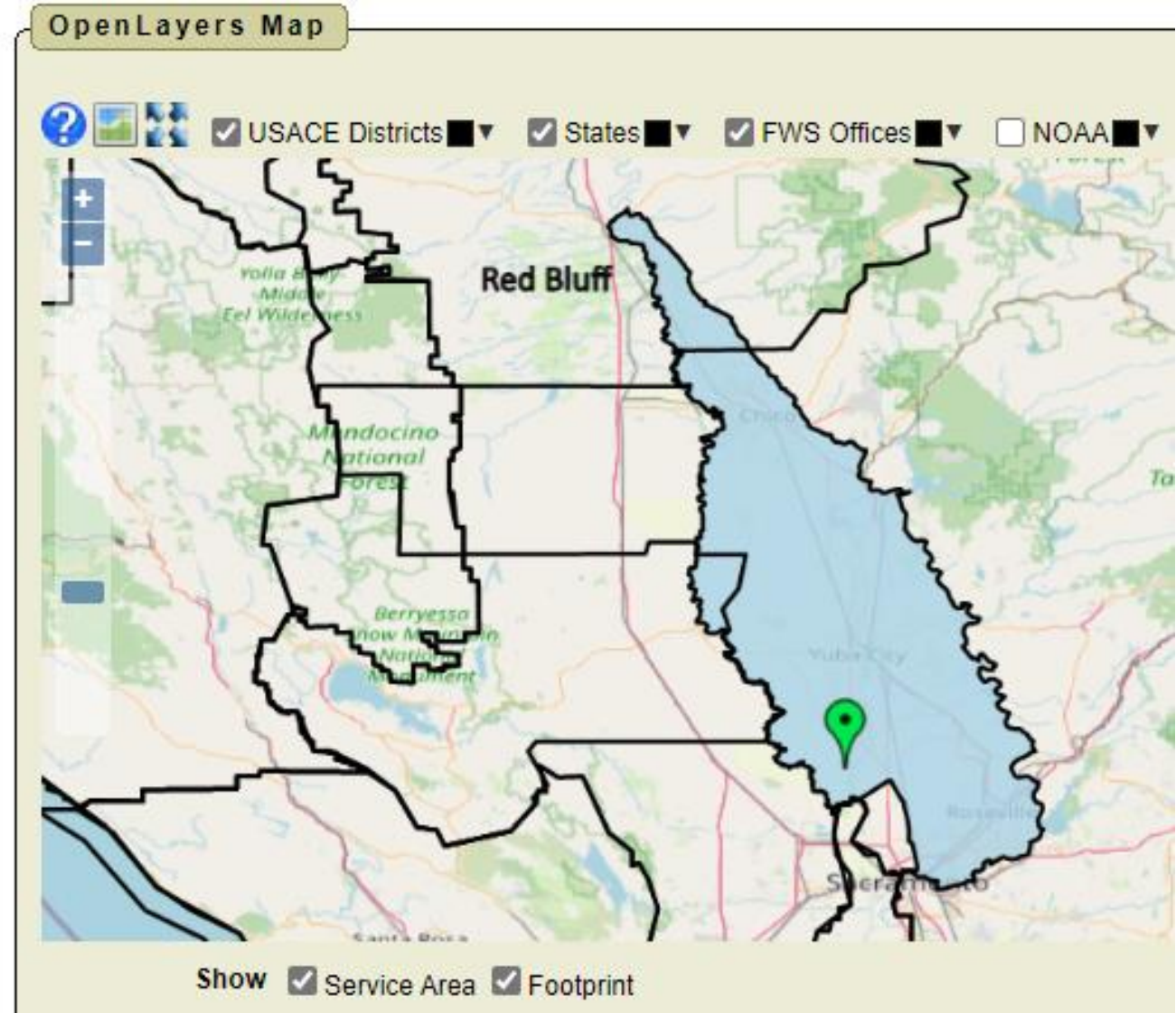
## Sutter Basin Conservation Bank

Chair(s):	USFWS
USACE District:	Sacramento
FWS Field Office:	Sacramento
NOAA Fisheries Region:	West Coast
State:	California
County:	Sutter [CA]
Permit No:	NA
Year Established:	2009
Total Acres:	429.14
Status:	Approved
Approved Date:	05/16/2009
Type:	Private Commercial
Website:	
Comments:	The Sutter Basin Conservation Bank was established to provide mitigation for impacts to the Giant Garter Snake ( <i>Thamnophis gigas</i> ) and its habitat in the northeast central valley. it will be managed in perpetuity as high quality habitat for the Giant Garter Snake (GGS)

## Bank Credit Classifications

### Species/Habitat

- [Giant garter snake \(GGS\)](#)



# MULTIPLE SERVICE AREAS

Multiple credit types – common!

May not be able to identify single Service Area that meets needs for all credit types at a bank.

Each credit type in a bank can have a different Service Area.

Service Areas for different credit types may overlap.

# CASE STUDY - MULTIPLE SERVICE AREAS

## Meridian Ranch Mitigation Bank

Butte County, CA

530 acres



Multiple agencies – USFWS, CDFW, EPA, USACE

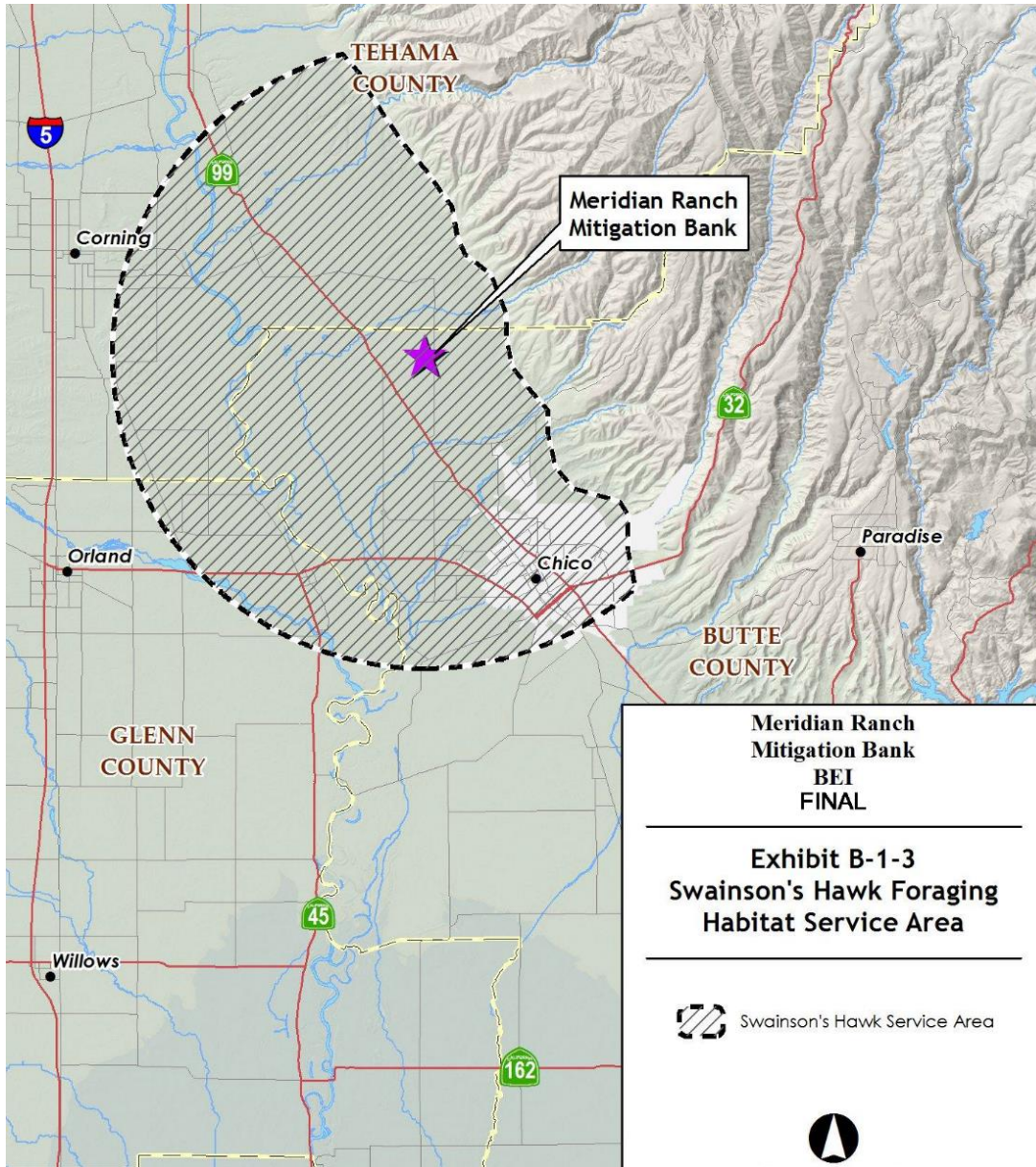
Multiple credit types – Swainson's Hawk, Vernal Pool Preservation, Vernal Pool Establishment



**Three distinct service areas**



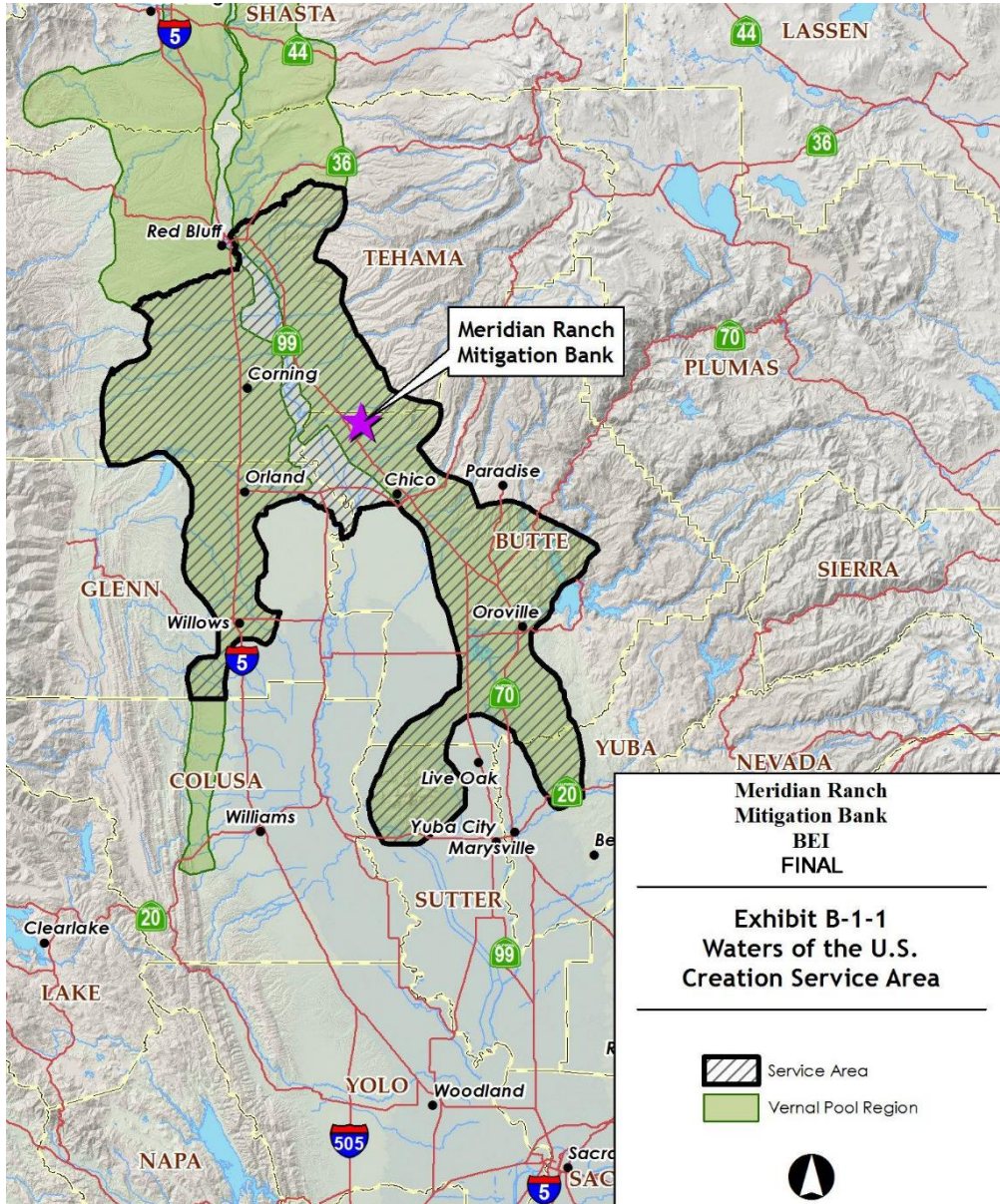
# CASE STUDY - MULTIPLE SERVICE AREAS



## Swainson's Hawk Service Area



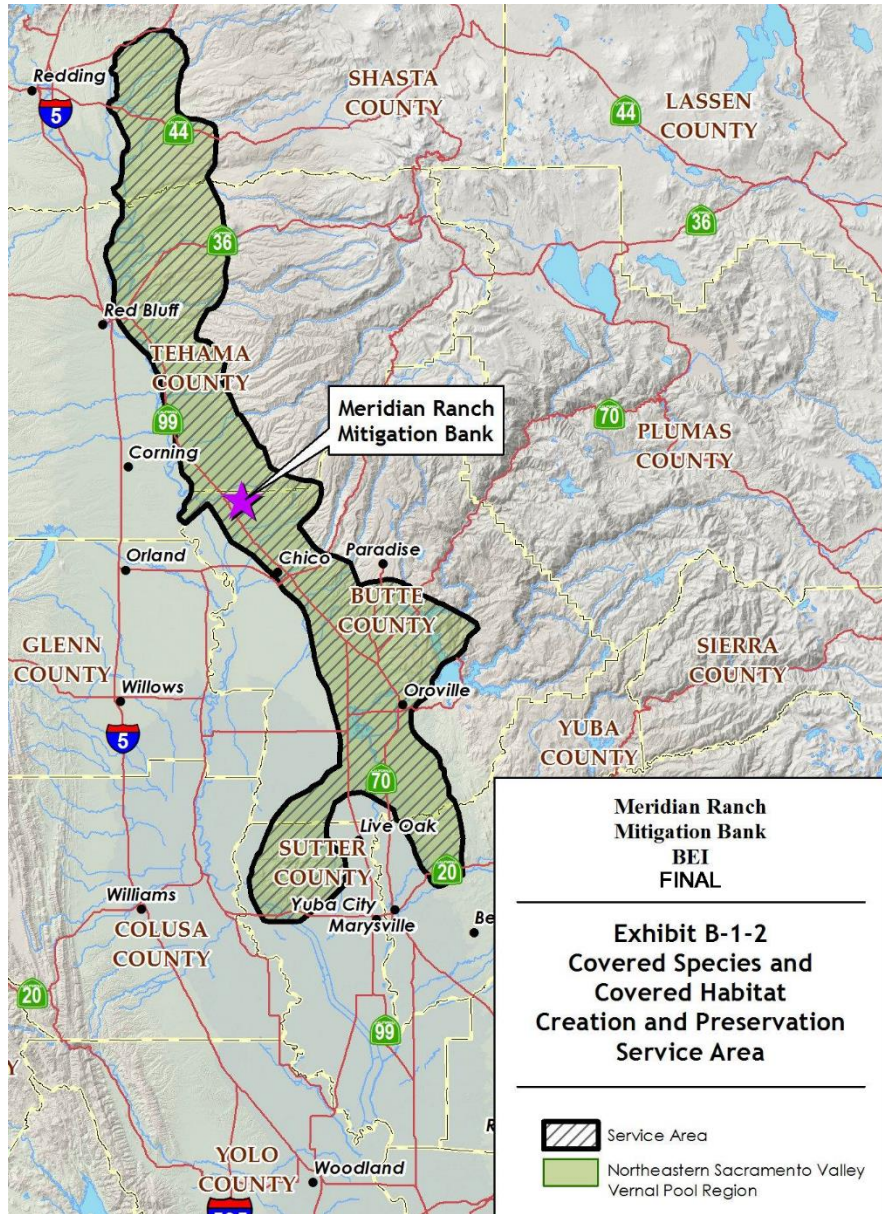
# CASE STUDY - MULTIPLE SERVICE AREAS



## Waters of the U.S. Creation Service Area



# CASE STUDY - MULTIPLE SERVICE AREAS

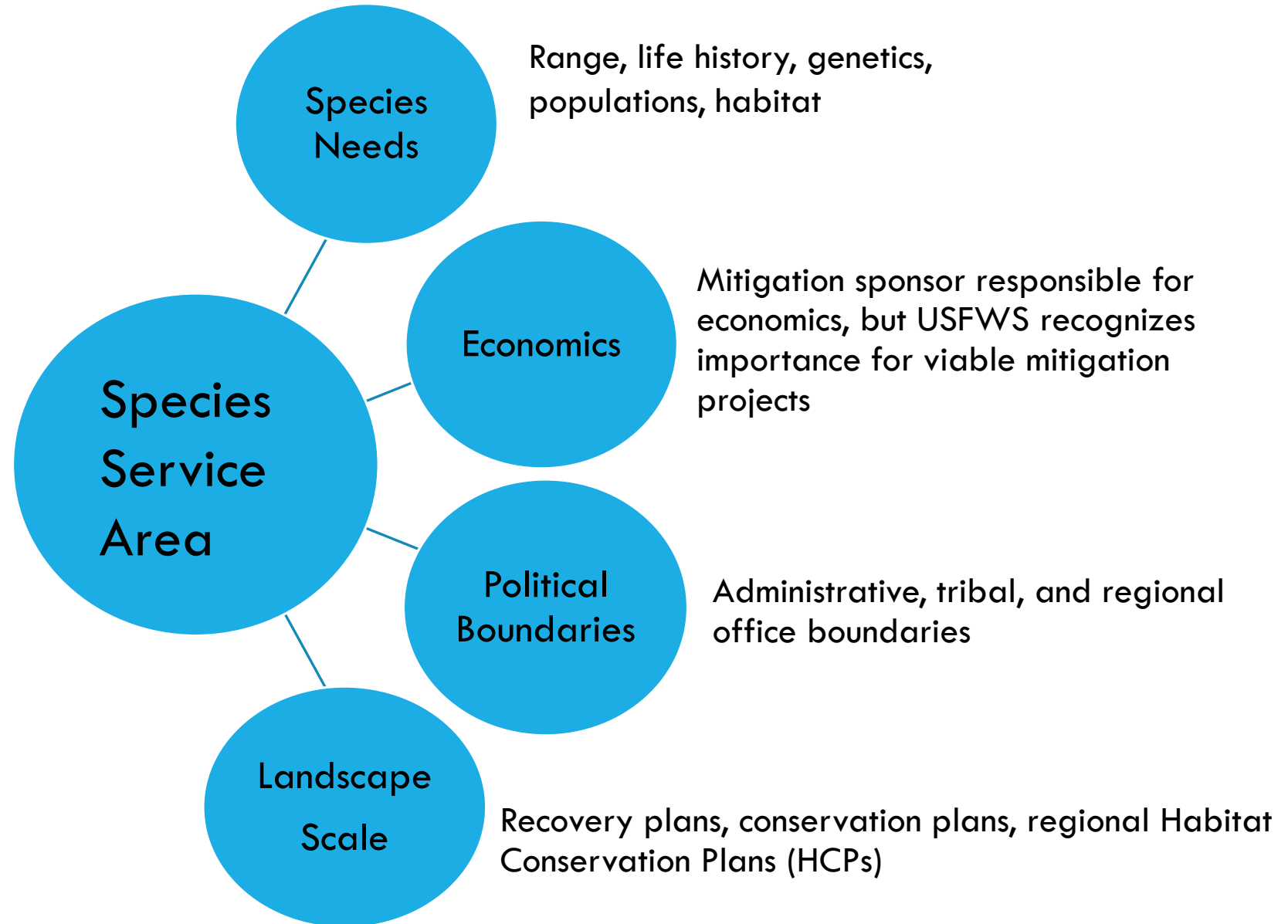


## Covered Species Creation and Preservation Service Area





# SPECIES CONSIDERATIONS



# CASE STUDY -USING SPECIES RANGE

## Carolina Heelsplitter Conservation Bank

Lancaster County, SC

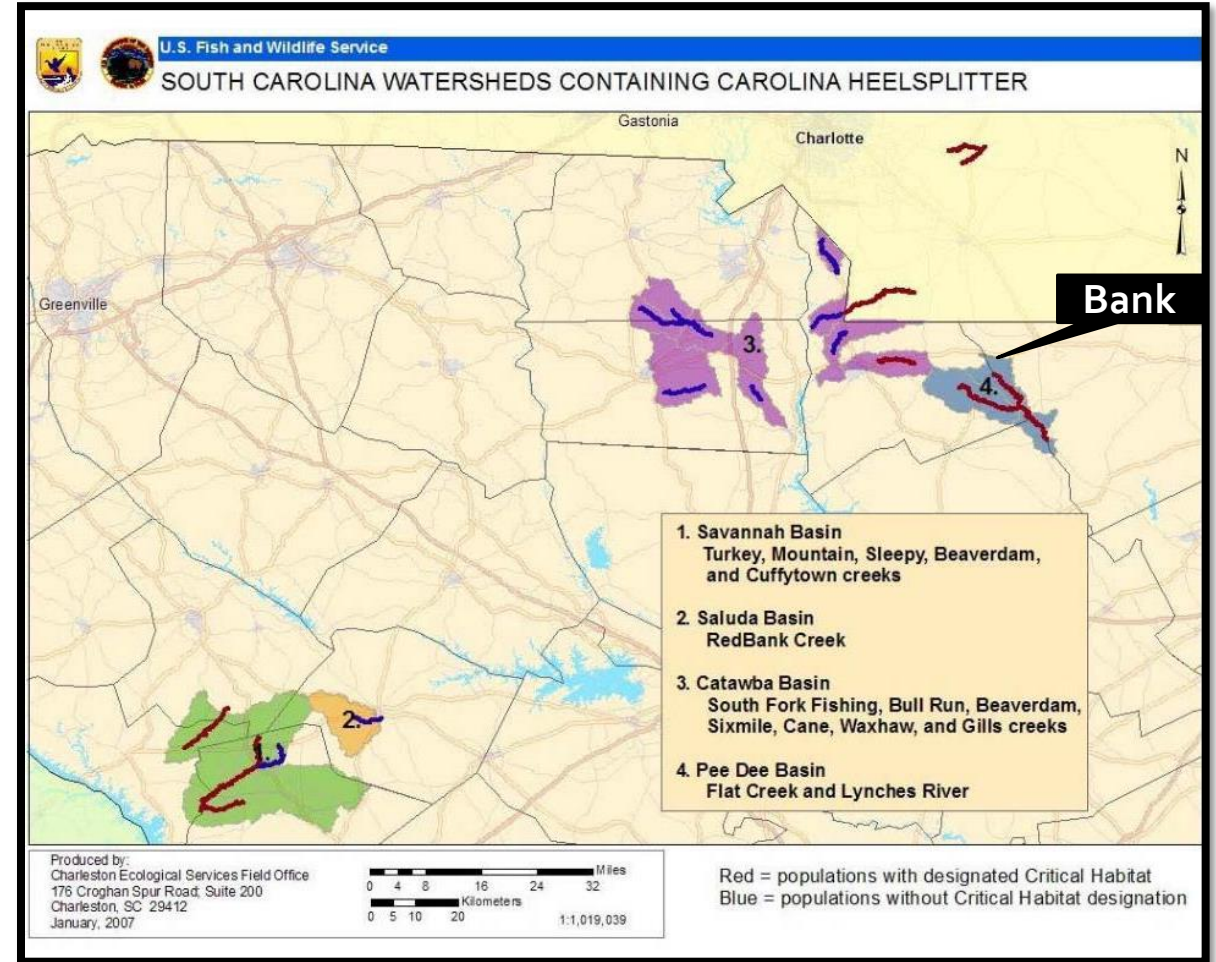
811 acres

Service Area = Watersheds that house known populations of heelsplitters

Not contiguous



Carolina heelsplitter  
Photo: USFWS



# CASE STUDY -USING RECOVERY PLANS

## Big Gun Conservation Bank

Placer County, CA

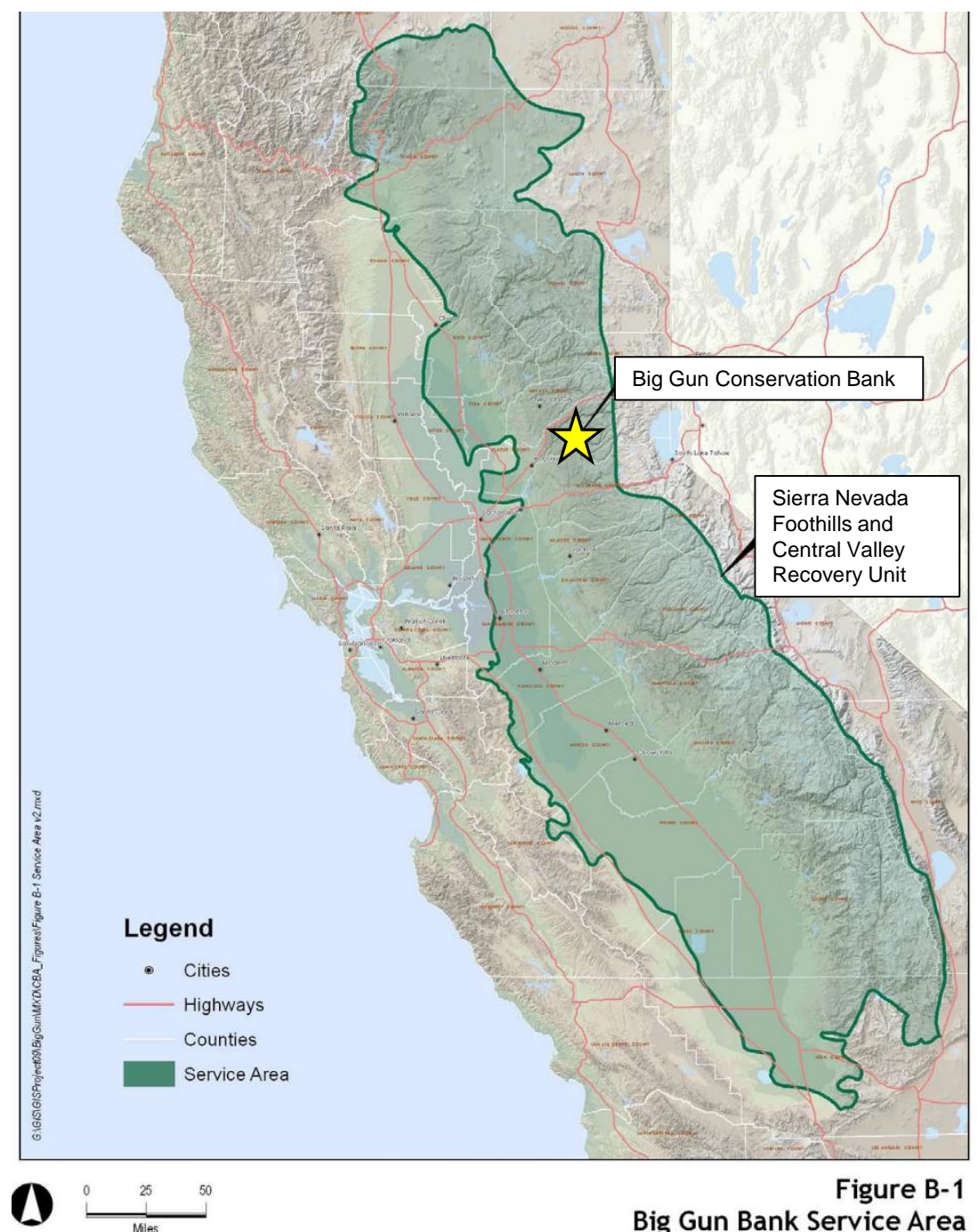
48 acres

Service Area = One recovery unit (RU)

RU 1 - Sierra Nevada Foothills and  
Central Valley (USFWS 2002)



California red-legged frog  
Photo: USFWS



# CASE STUDY - USING GENETICS

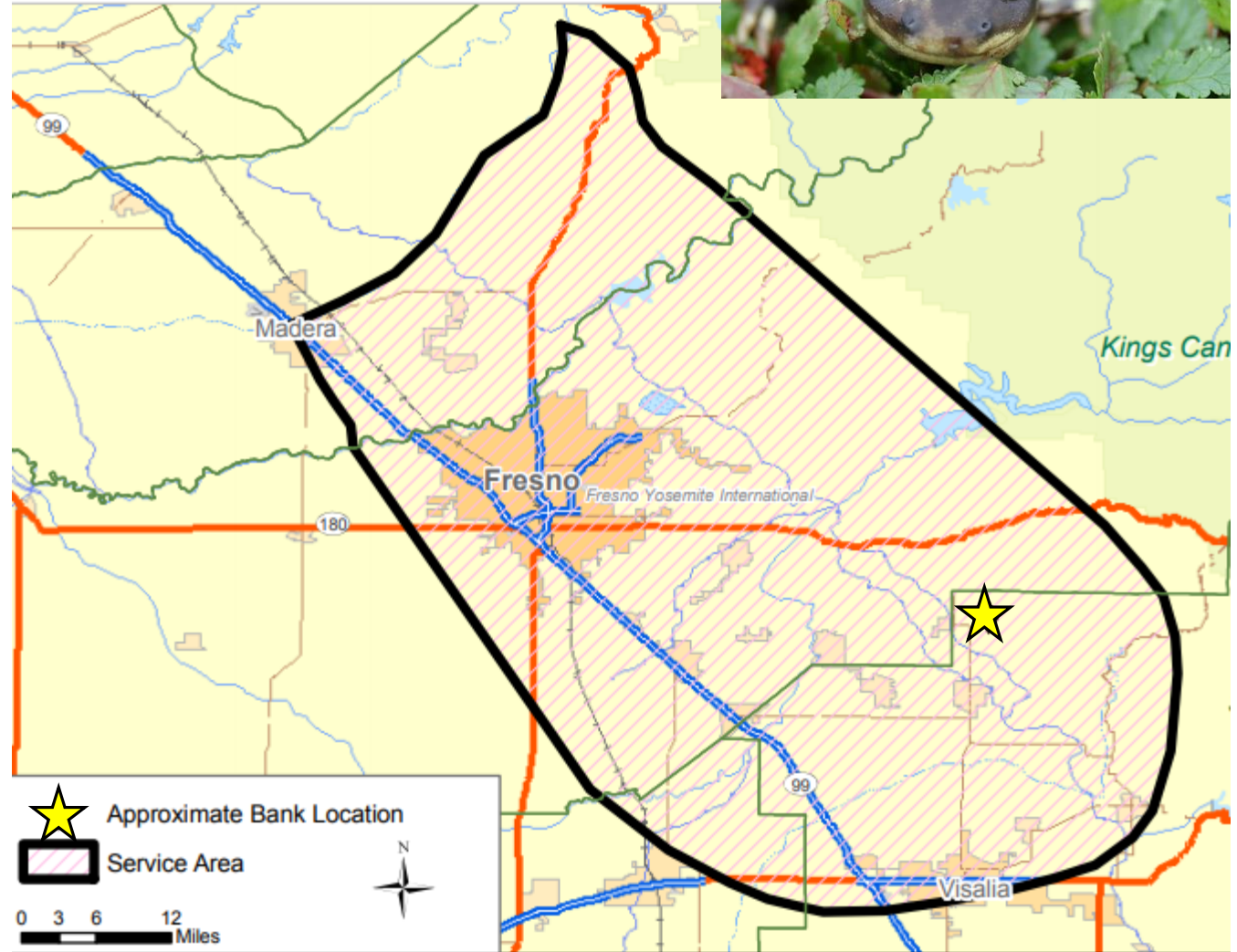
## Sand Creek Conservation Bank

Tulare County, CA

498 acres

Genetic differentiation between four subgroups that correspond with geographic distribution (Shaffer et al. 2004, 2013)

Service Area = Southern San Joaquin Valley subpopulation as defined by Shaffer et al. (2004)



# CASE STUDY - USING CONSERVATION STRATEGIES

## Alton North Conservation Bank

Sonoma County, CA

22.67 acres



Burke's goldfields  
Photo: USFWS

The Santa Rosa Plain Conservation Strategy covers the Sonoma Co. population of the Calif. tiger salamander and four listed plant species

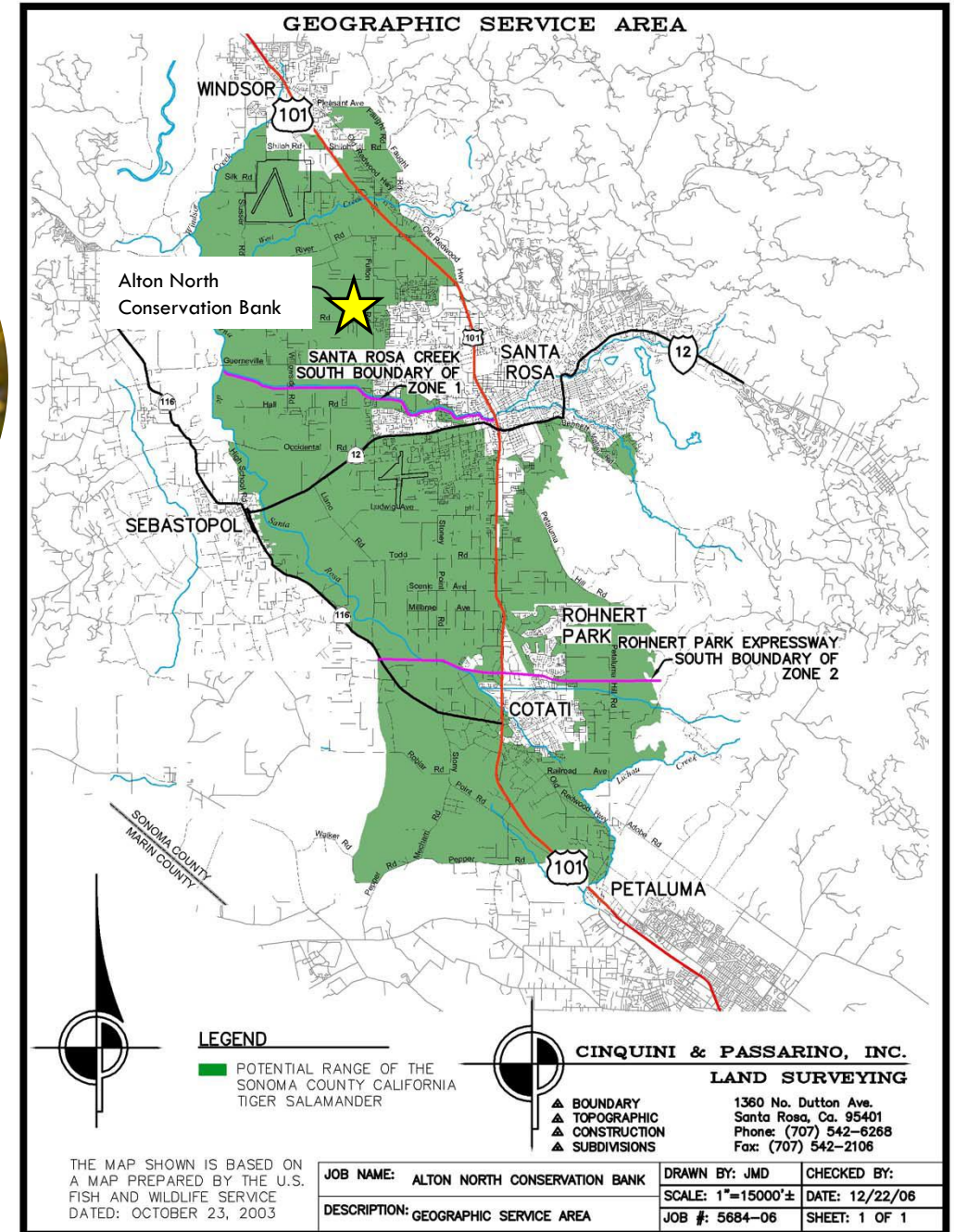
All banks have the same service area, for all covered species = Santa Rosa Plain



CA tiger salamander  
Photo: USFWS



Sonoma sunshine  
Photo: USFWS



# CASE STUDY - WORKING WITH HCPS

## Goldfields Conservation Bank

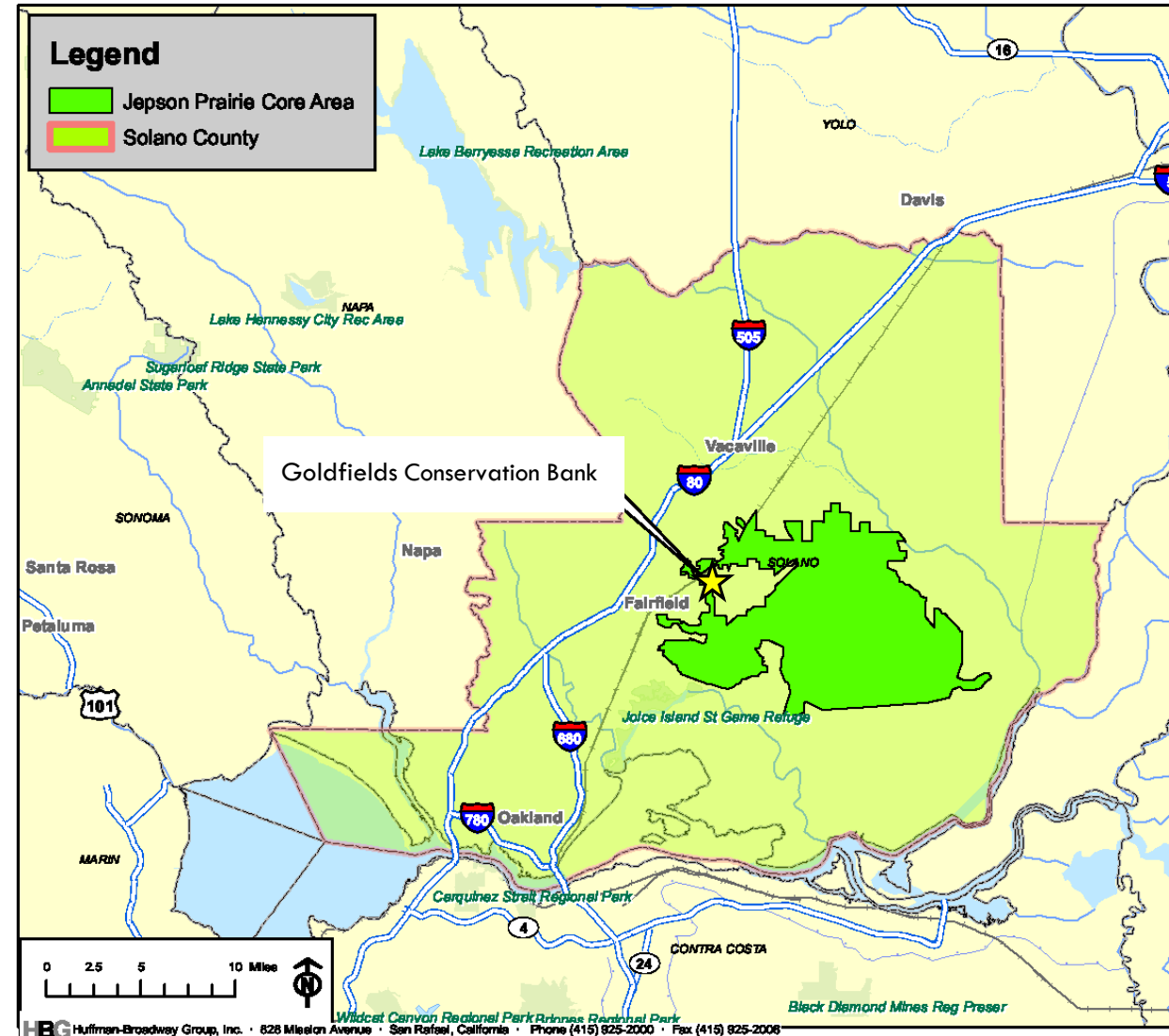
Solano County, CA

152 acres

Contra Costa goldfields Service Area follows Solano HCP boundary



Contra Costa goldfields  
Photo: John Game



**Goldfields Conservation Bank Service Area Map for Contra Costa Goldfields**  
Goldfields Conservation Bank, Solano County, California

# RECAP

## Service Area in the Bank Enabling Instrument

- Written description & map
- Exhibit B in CA

## Service Area in RIBITS

- Searchable using the “Find Credits” tool

## Multiple Service Areas

- COMMON

## Service Area Considerations for Species

- Just a few of the many examples