

Mitigating for Impacts to Indiana Bats: An Overview of the Range-wide Indiana Bat In-Lieu Fee Program



Who is The Conservation Fund?

- The only nonprofit chartered for both land conservation and economic development.
- Our programs redefine conservation and include focus on land, water and species conservation and mitigation, green business lending, community economic development, planning and stakeholder engagement.
- Since 1985, we've protected more than 8 million acres of land in all 50 states.

We have maintained a 4-star rating from Charity Navigator for 16 consecutive years, with 96% of every dollar devoted to programs.

Range-wide Indiana Bat In-Lieu Fee Program: Program Overview

Developed as part of range-wide Programmatic Section 7
Endangered Species Act Consultation with FHWA/FTA/FRA



Image courtesy USFWS

Objectives:

- 1) Create consistent range-wide ESA Section 7 consultation for Ibat and NLEB
- 2) Reduce time, cost, and workload associated with Section 7 consultations
- 3) Implement landscape-scale conservation strategy for Ibat & NLEB

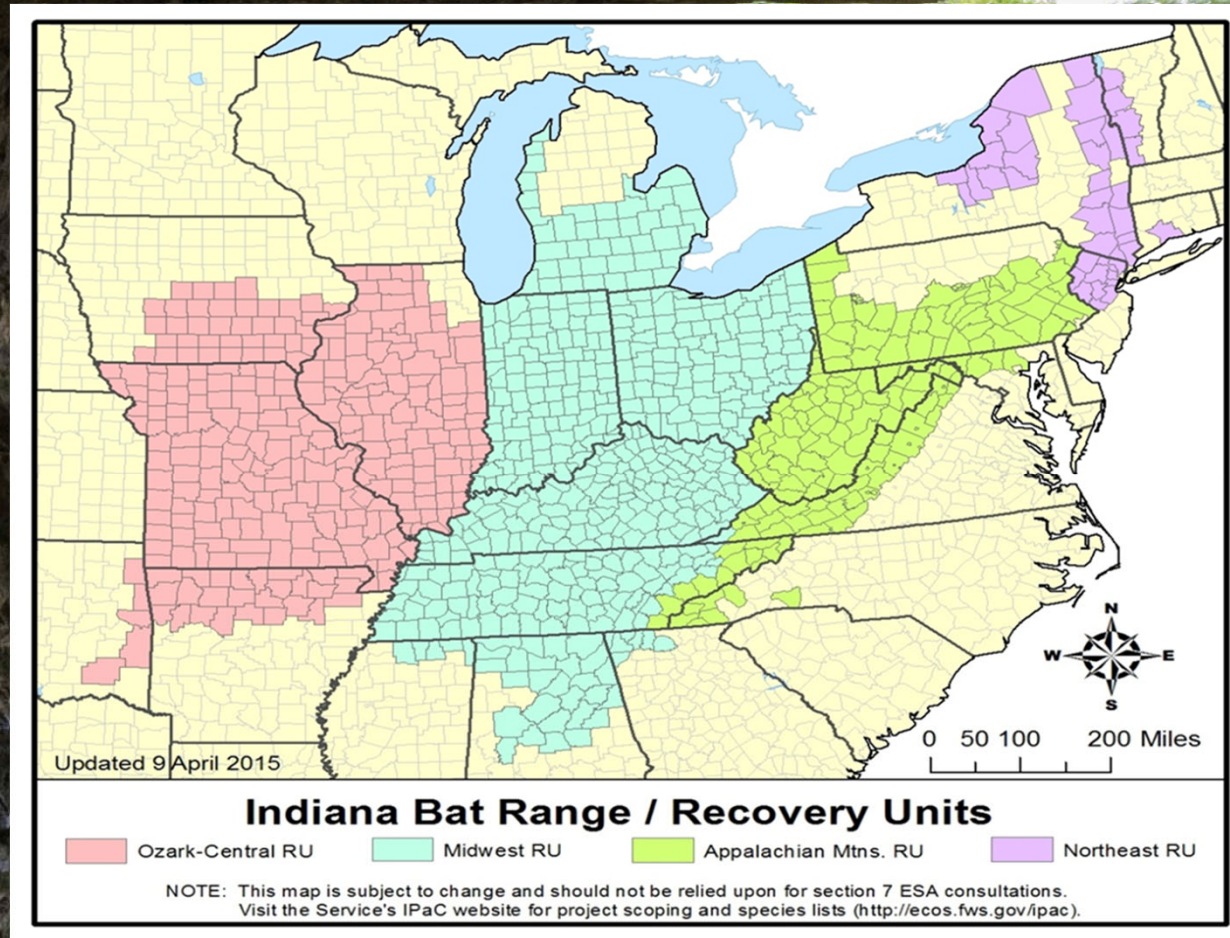
Indiana Bat Range-wide Conservation Strategy and Programmatic Consultation

Key Concepts

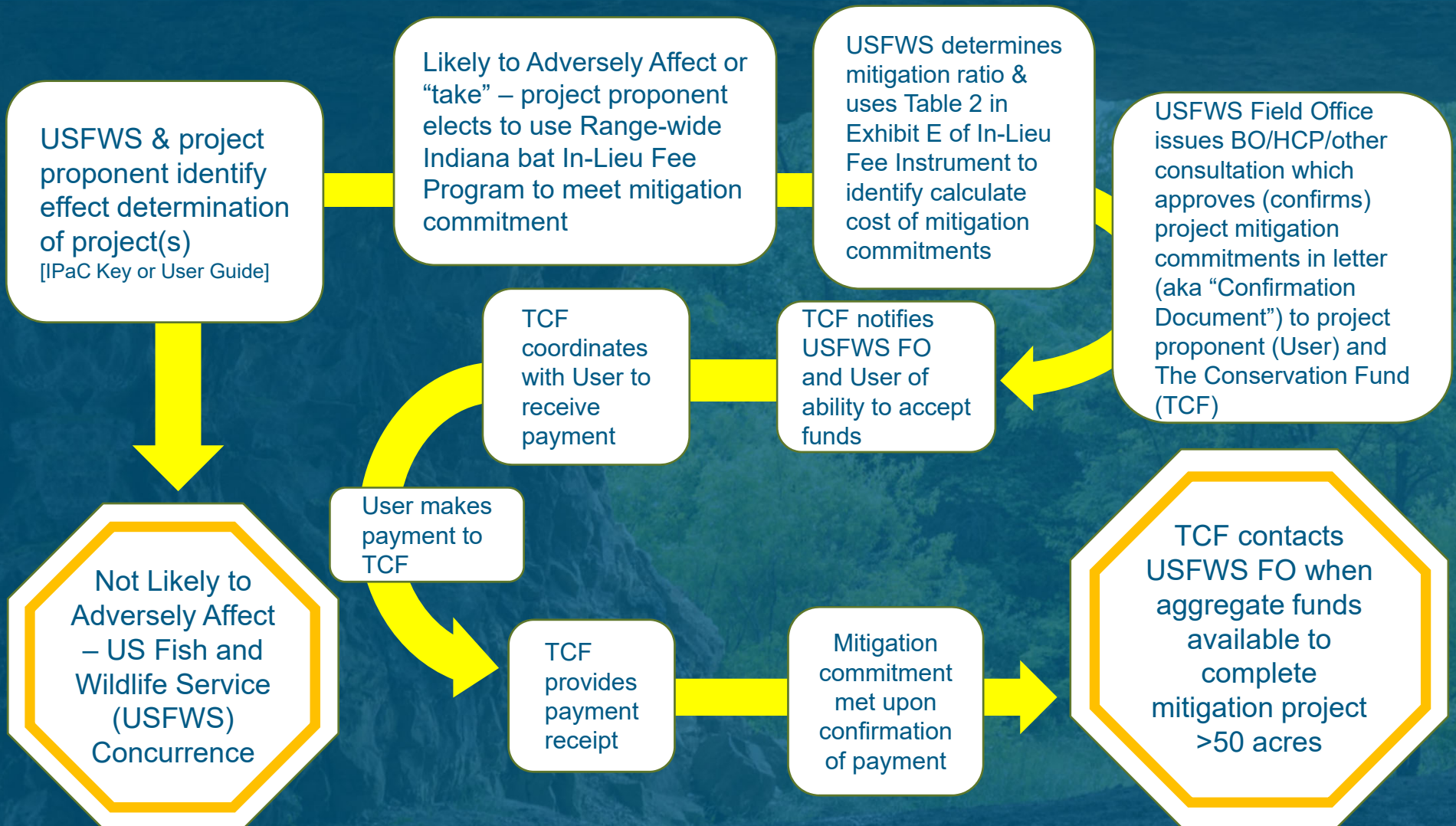
1. Provide mitigation option for transportation projects that would have unavoidable adverse impacts to Indiana bat
2. Serve as mitigation option for non-transportation projects, provided that such projects are covered in a USFWS-approved BO or HCP
3. Implement the highest quality priority compensatory actions where practicable

Range-wide Indiana Bat In-Lieu Fee Program: Program Overview

Geographic Service Areas



Workflow for Use of Range-wide Indiana Bat In-Lieu Fee Program



Range-wide Indiana Bat In-Lieu Fee Program: Program Overview

Mitigation Ratios for Transportation Projects

Project Location	<30% Forest Cover (within County)		≥30% Forest Cover (within County)	
	Active*	Inactive*	Active*	Inactive*
0-100 ft. edge of road/rail ballast	1.5	NLAA	1.25	NLAA
0-100 ft. edge of road/rail ballast – documented roosting/foraging habitat	2.25	1.75	2	1.5
100-300 ft. edge of road/rail ballast	2.25	1.75	2	1.5

*Consult with the USFWS Field Office to determine appropriate timeframes to determine active and inactive forest cover.

Range-wide Indiana Bat In-Lieu Fee Program: Program Overview

Confirmation Process:

- Submit Confirmation Document The Conservation Fund at :
ibatilfcoordinator@conservationfund.org
- The Conservation Fund:
 - Informs USFWS & Project Proponent of ability to accept funds*
 - Provides Project Proponent instructions for transfer of funds

Confirmation Document must contain:

- Acres of impact
- Mitigation ratio
- Mitigation acres
- Mitigation fee to be paid (per Exhibit E, Table 2 of Ibat ILF Instrument)

* Funds cannot be accepted into the Ibat ILF **UNLESS** USFWS FO has provided Conservation Focus Areas for the Service Area

Range-wide Indiana Bat In-Lieu Fee Program: Program Overview

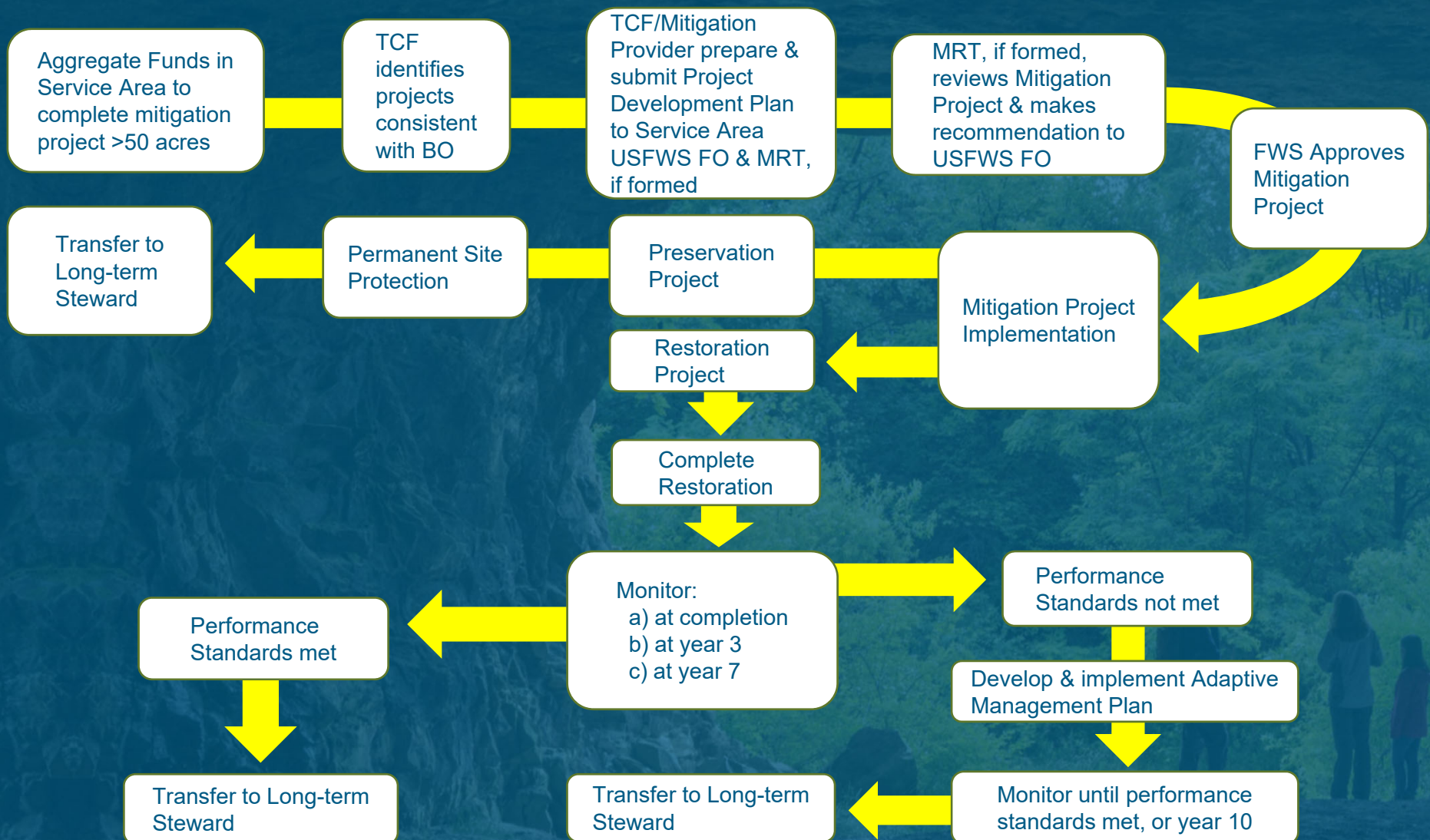
Conservation Focus Areas (CFAs)

- Mandatory for Service Area/State participation in program
- Service Area CFAs incorporate:
 - Indiana bat habitat types (e.g., Summer Habitat CFAs, Winter Habitat CFAs).
 - Should consist of comparatively large areas containing the potential for preservation or restoration of Indiana bat habitat in key landscapes for Indiana bat conservation and recovery.

To date, CFAs provided for:

Arkansas	Indiana	North Carolina	Pennsylvania
Georgia	Michigan	New Jersey	Tennessee
Iowa	Missouri	New York	West Virginia
Illinois	Mississippi	Ohio	Virginia

Workflow for Mitigation Projects Under Range-wide Indiana Bat In-Lieu Fee Program



Range-wide Indiana Bat In-Lieu Fee Program: Program Overview

The Conservation Fund IBAT ILF Contacts:

- ibatilfcoordinator@conservationfund.org
- Natasha Skelton, Program Administrator, 540.271.0746
- Roberta Zwier, Program Director, 713.447.2081

Resources including the Indiana Bat In-Lieu Fee Program Instrument, and current land value tables for use in calculating mitigation fees, please refer to the U.S. Fish & Wildlife Service's website for the Indiana and Northern Long-eared Bat Section 7 Consultation and Conservation Strategies for Transportation Agencies:

<https://www.fws.gov/midwest/endangered/section7/fhwa/index.html>