



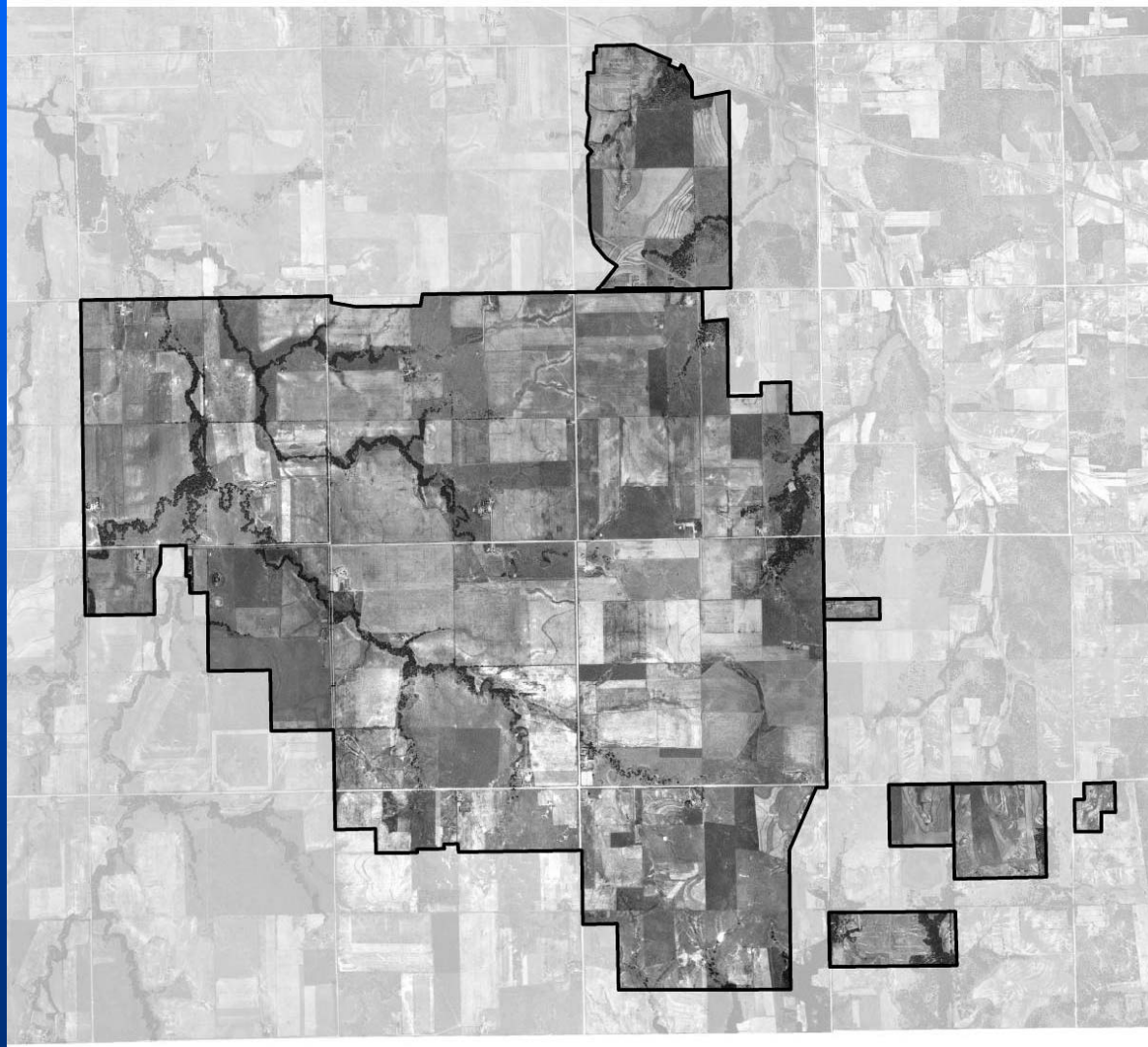
U.S. AIR FORCE

Tinker Air Force Base Presettlement – 1880



Tinker Air Force Base

1930's



Tinker Air Force Base 1940's



Tinker Air Force Base 1940's



Tinker Air Force Base

1940's



Tinker Air Force Base

1940's



Tinker Air Force Base Today



Tinker Air Force Base Today

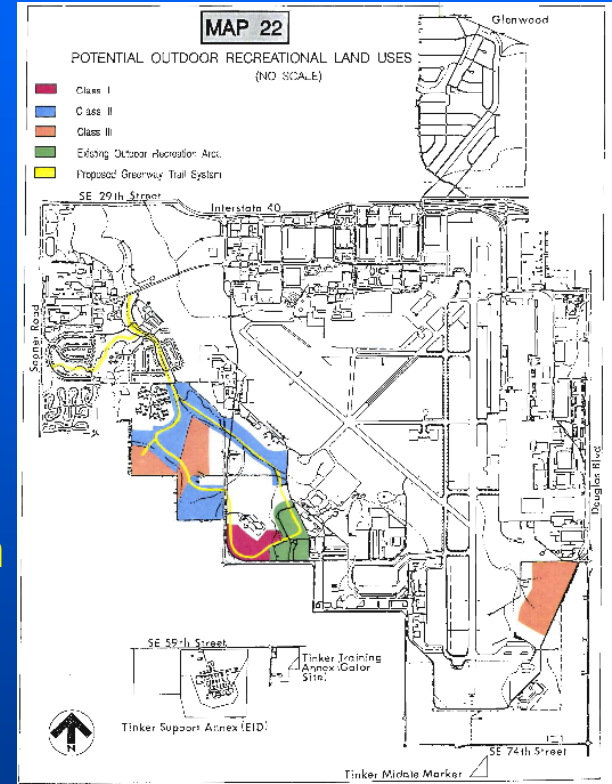
- > 700 industrial and office buildings
- ~ 700 family housing units
- Two 10,000-foot runways



- OKC ALC, AWACS, Navy, 507th ARW, 3rd CCGp
- 28K military & civilian personnel

GI Planning Evolution

- 1991 – Integrated Natural Resources Mgt Plan
- 2003 – Stakeholder Meetings
 - Landscape Master Plan → Greenway Master Plan
- 2005 – Strategic Conservation Planning Using a Green Infrastructure Approach
- 2007 – Tinker Air Force Base Green Infrastructure Plan



GI Vision

- **Customary Urban Conservation Planning (Before)**

- Haphazard/Piecemealed
- Isolated
- Reactive
- Narrowly focused
- Not integrated
- Unproductive
- Painful

- **GI Planning (After)**

- Proactive
- Big picture planning
- Integrated with local community comprehensive plan
- Shared vision (settled expectations)
- Productive (seizes opportunities)
- Easier

GI Vision

“Most of our wildlife conservation troubles are due to lack of organization. Wildlife interests remind me of an unorganized army beaten in every battle, zealous and brave but unable to combat legions who are organized to get what they want.”

– Jay “Ding” Darling

Plan Development

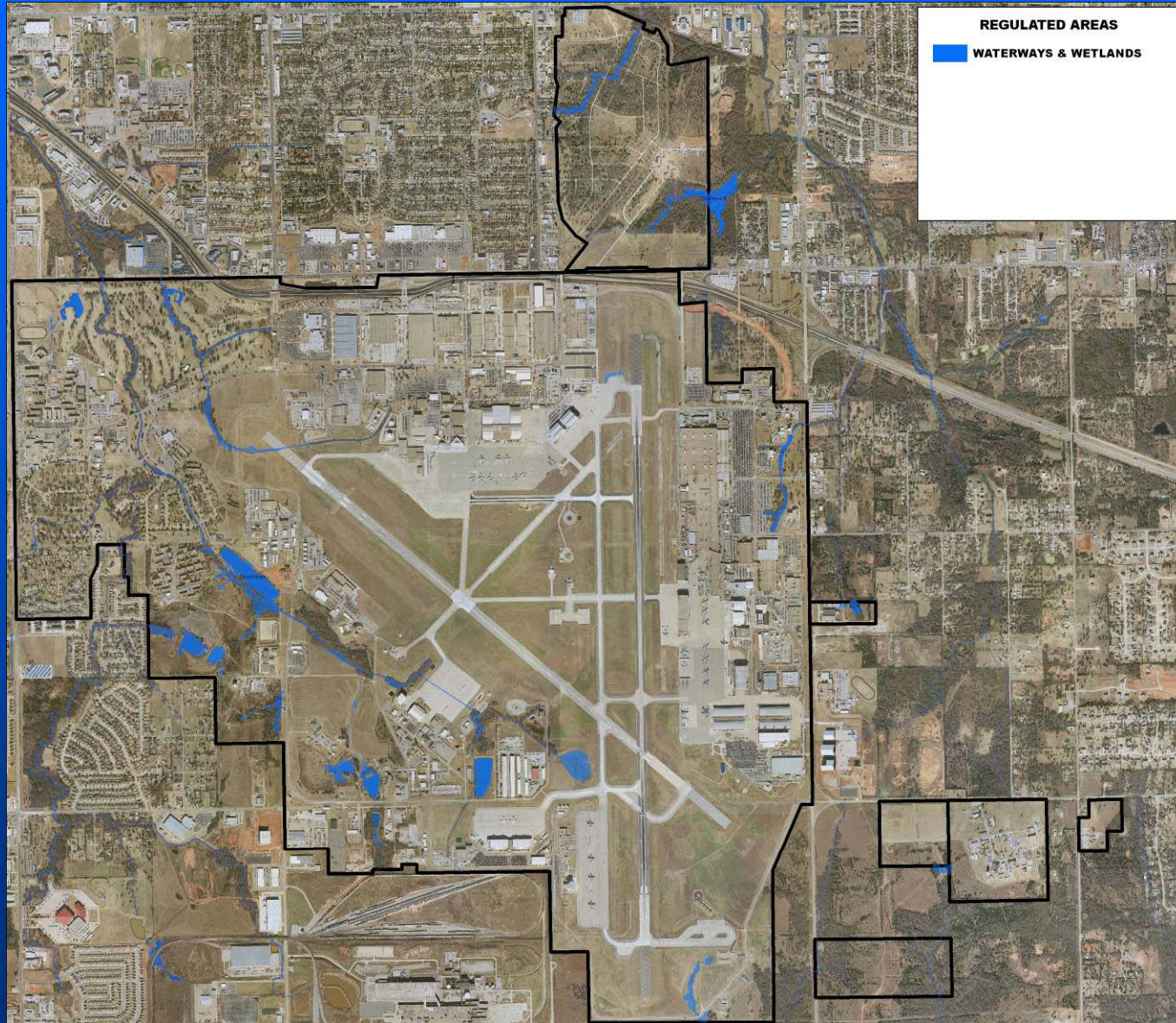
- **Green Infrastructure:** An *interconnected network* of waterways, wetlands, woodlands, grasslands, and other natural areas of base-wide significance.
- **Gray Infrastructure:** buildings, roads, runways, ramps, utilities, and other man-made features in the landscape.
 - Regulated areas
 - Evaluation areas
 - Network gaps

Plan Development

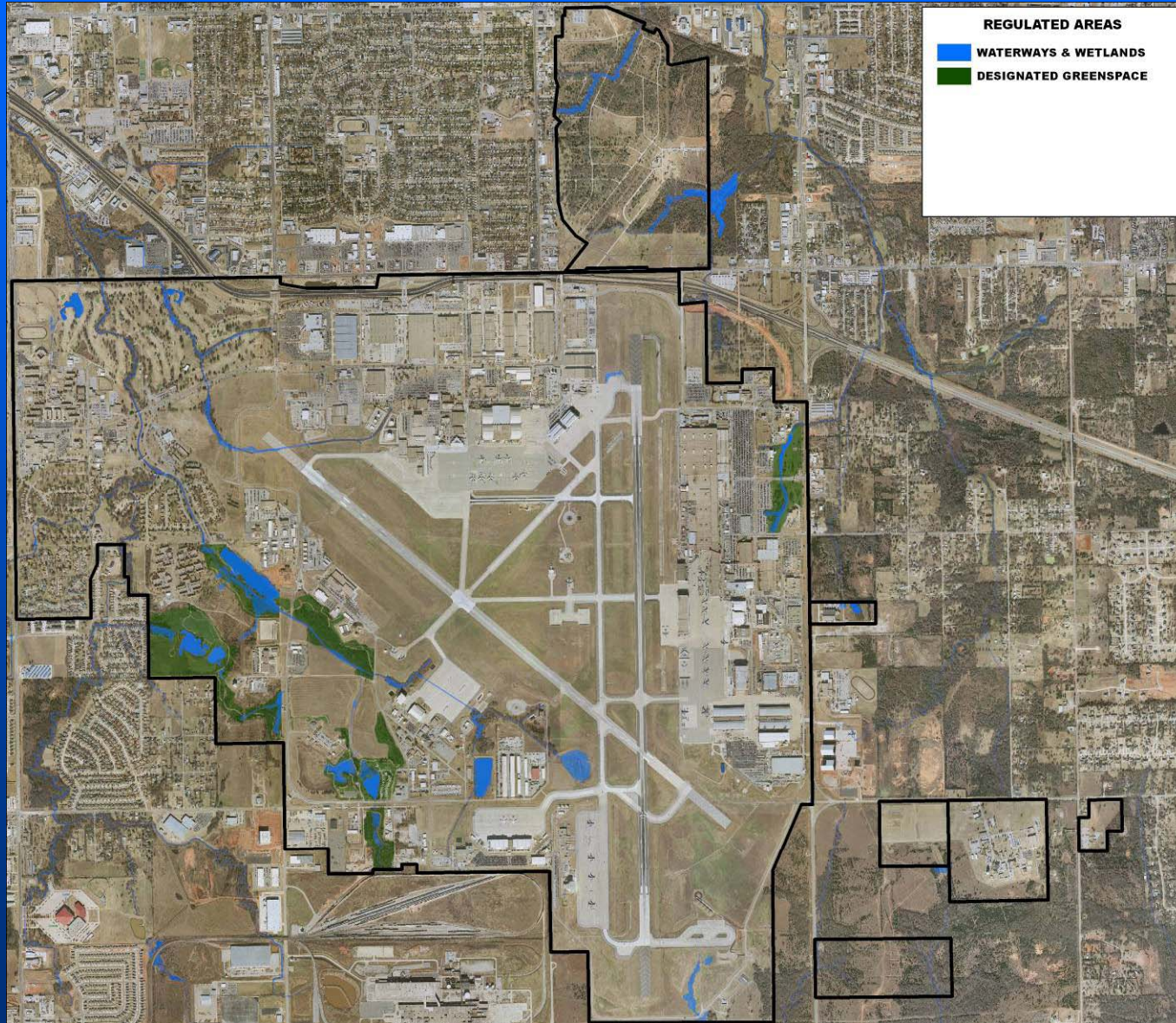
- **IDENTIFIED SENSITIVE RESOURCES**

- Waterways & wetlands
- 100-year floodplain
- Woodlands & grasslands
- Sensitive flora & fauna habitat
- Restoration areas (e.g., turfgrass)

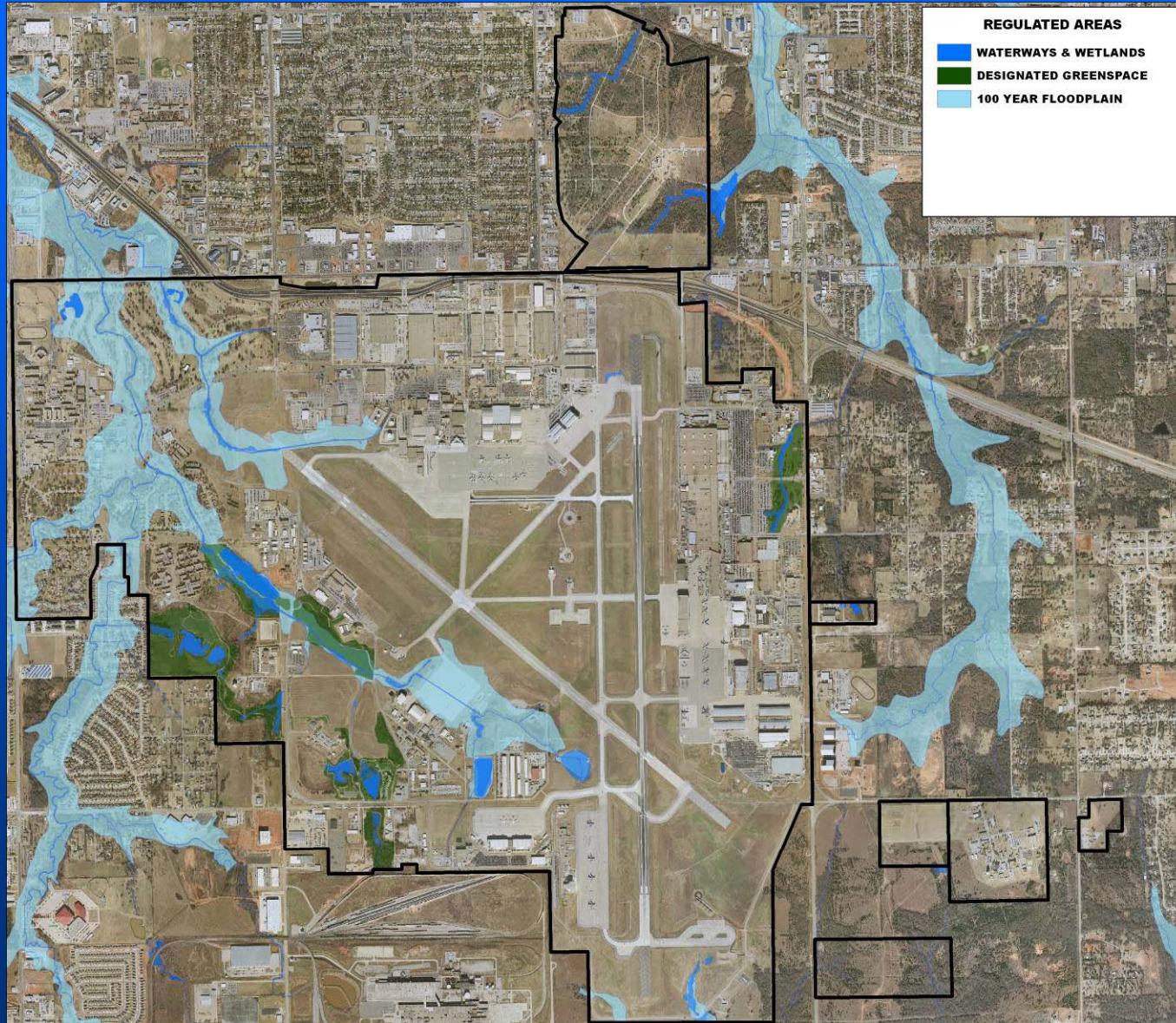
Plan Development



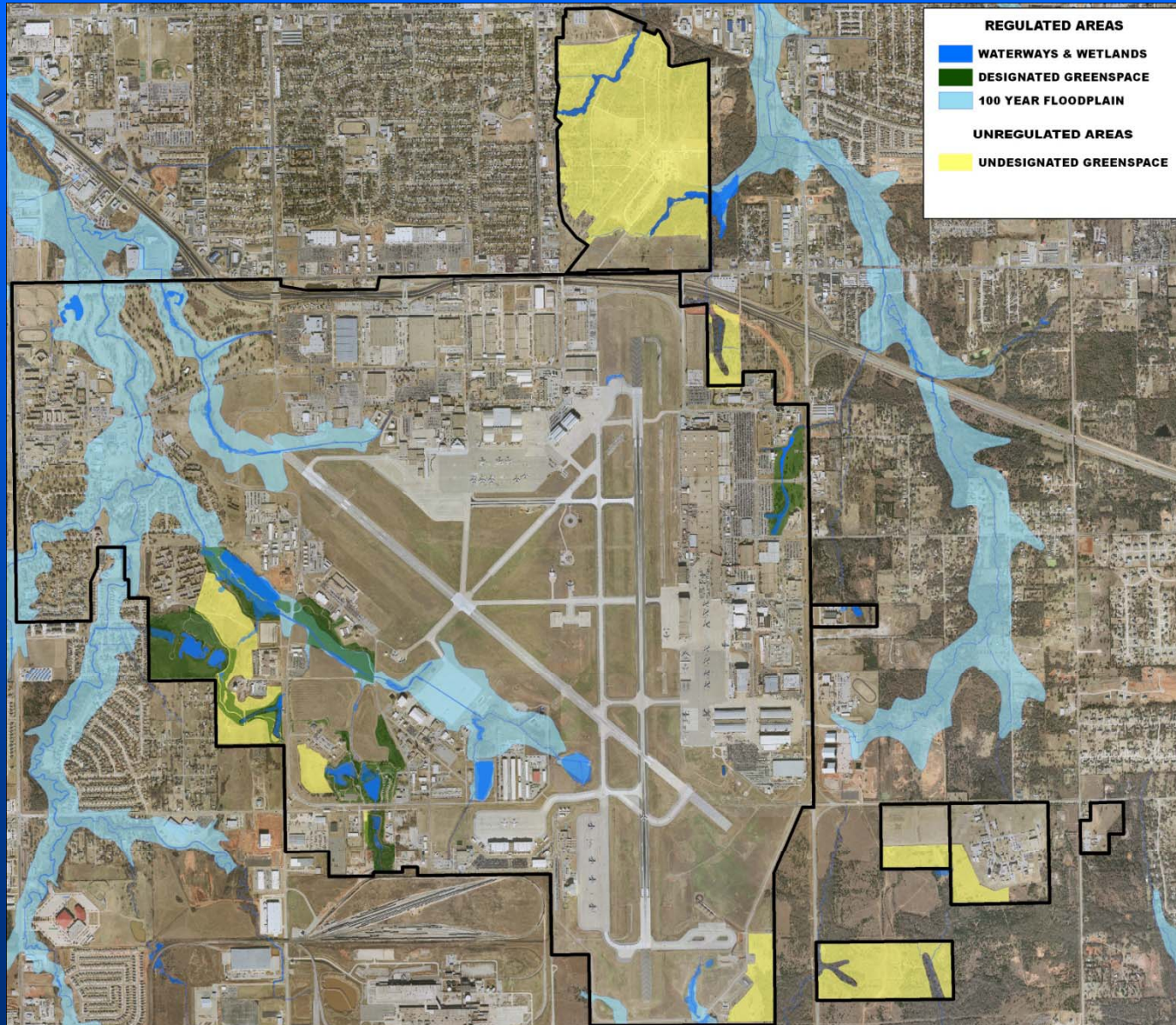
Plan Development



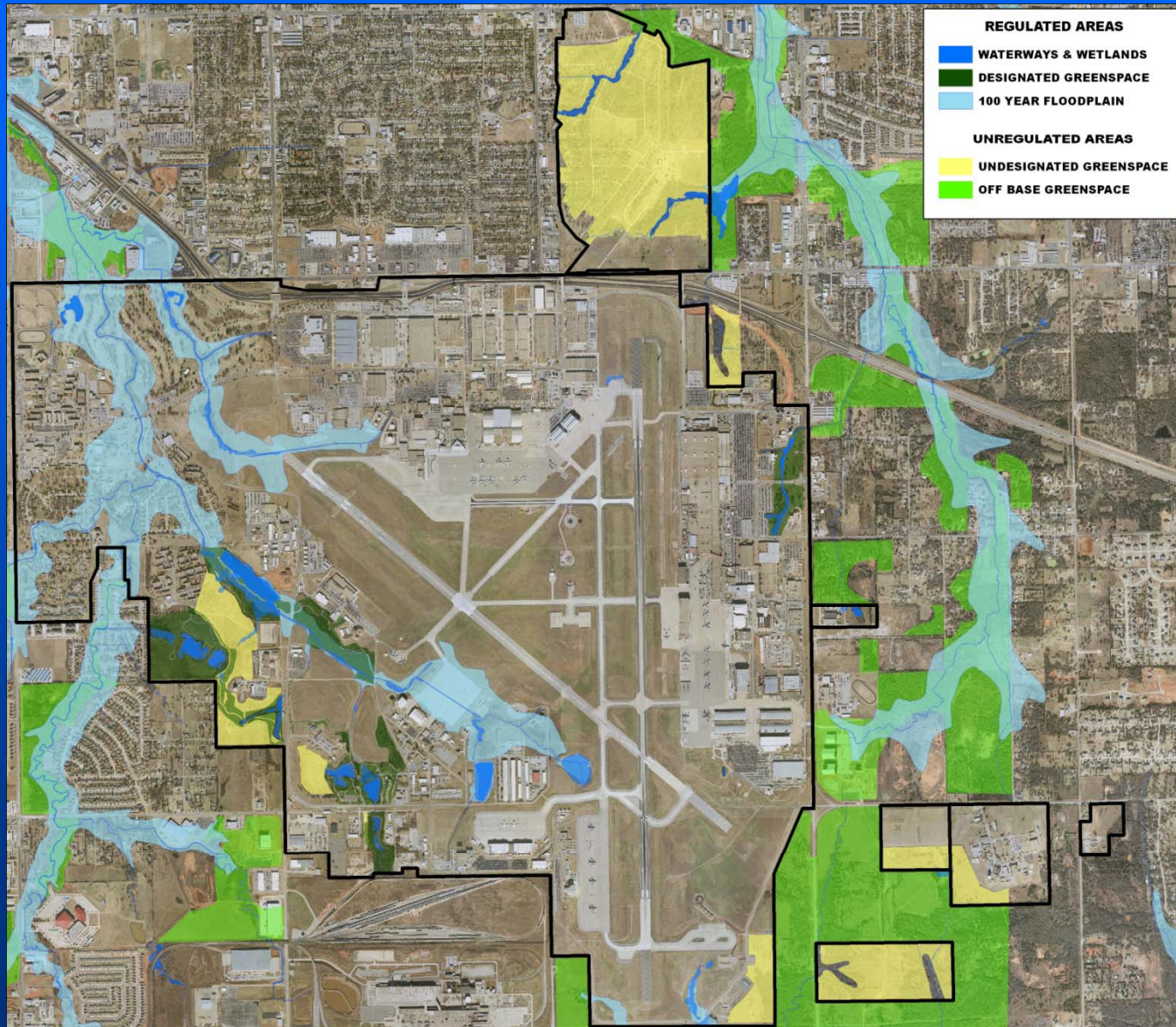
Plan Development



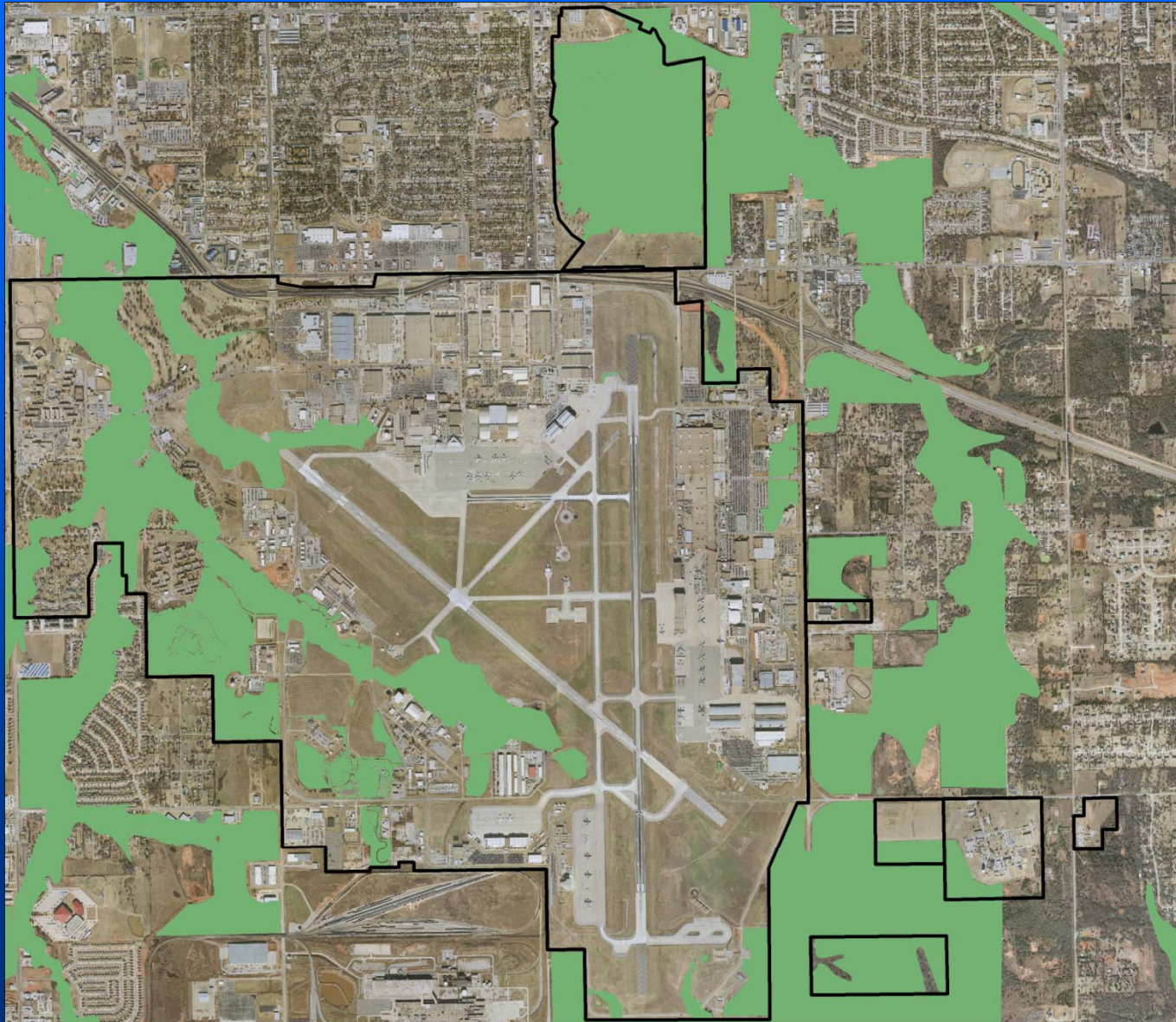
Plan Development



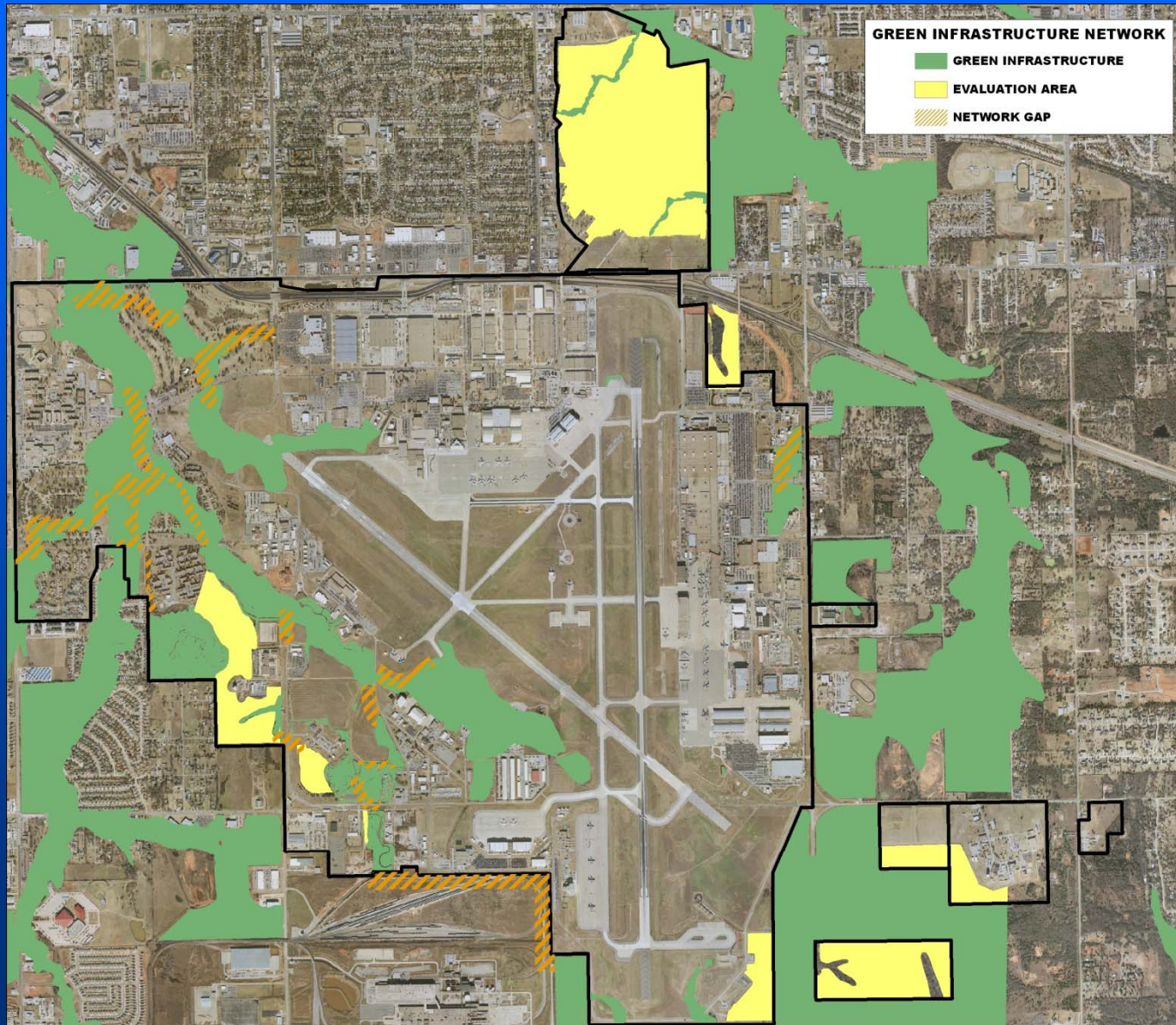
Plan Development



Plan Development



Plan Development



Plan Development

- **Goals and objectives**

- **Policies**

Policy 1: Balance gray & green infrastructure development

Policy 2: No net loss of floodplain capacity

Policy 3: Remove facilities located in 100-year floodplain

Policy 4: Practice compact development & design projects to “fit” the natural community

Policy 5: Restore & maintain network gaps (minimum of 300' wide corridors)

Plan Development

- **Guiding principles**

Guiding Principle 1: Natural solitude; relaxed atmosphere; aesthetically pleasing and safe

Guiding Principle 2: Healthy native prairie/savannah & wooded bottomland system

Guiding Principle 3: Improve user satisfaction

Guiding Principle 4: Decrease maintenance requirements

Guiding Principle 5: Promote outdoor education and awareness

Plan Development



Plan Development

- Work plans/schedules



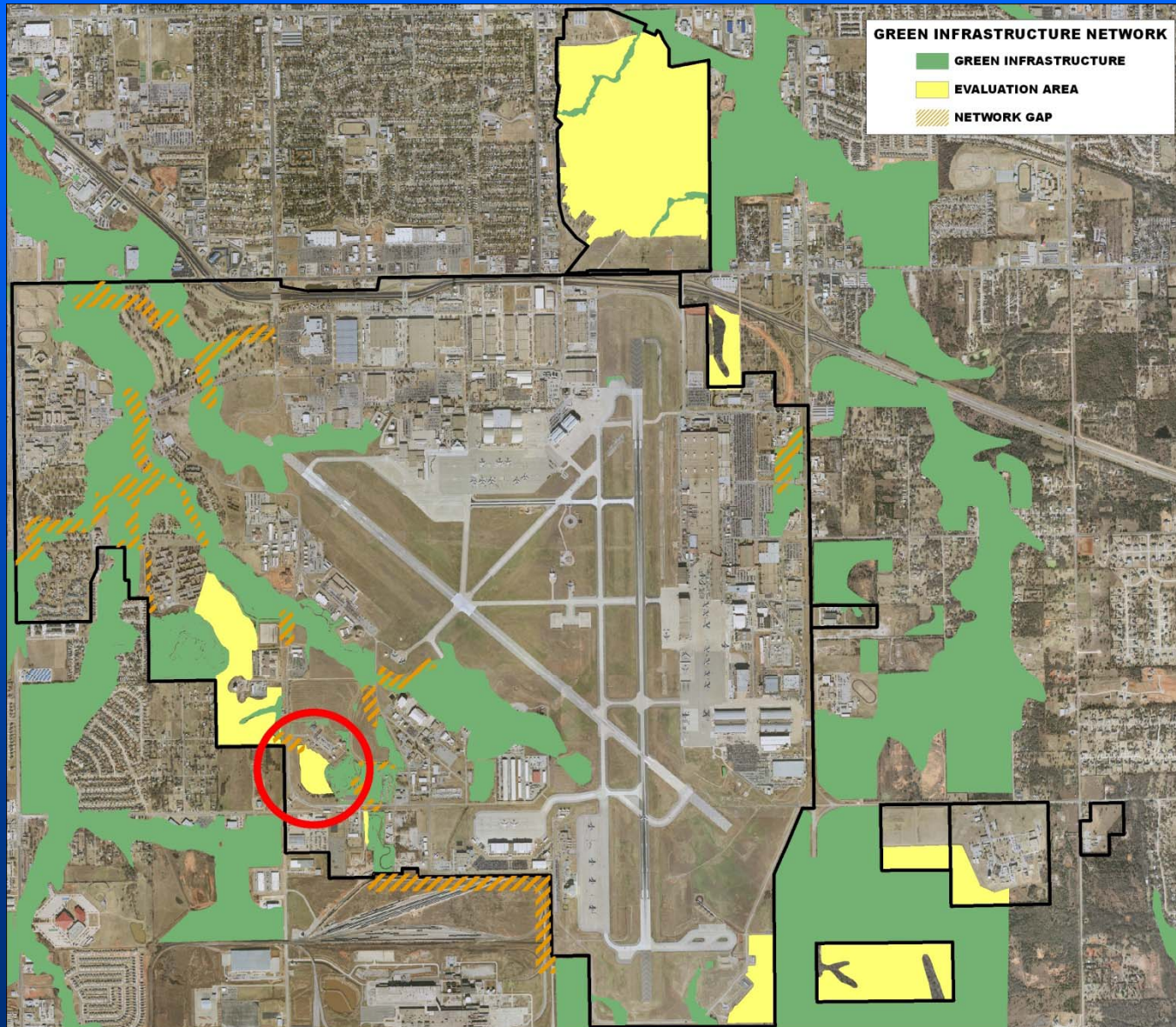
Map 1b

URBAN GREENWAY Reserve 1 East General Improvements

Label	Improvement Description
1	When trails are upgraded to 8' wide, install removable bollards in center of trail to control access of larger vehicles
2	Widen trail to 8' and resurface with recycled rubberized material suitable for diverse users including joggers, bicyclists, rollerbladers, and skateboarders
3	Flush mount monitoring wells where feasible
4	Plant cottonwoods (cottonless cultivar)
5	Plant mesophytic and hydrophytic vegetation at ponded area
6	Plant bottom of ditch in lowland switchgrass
7	Remove all existing split-rail fencing upon deterioration
8	Install new split-rail fencing
9	Remove two cedars adjacent to new B-1055 trail segment
10	Standardize and update all signage within the greenway (info range detour signs, photo-light, etc.)
11	Fill gap in berm to redirect water flow and stop erosion
12	Plant narrow cedars or Virginia creeper at corner of fence to screen B-1049
13	Conduct woodland assessment with Oklahoma Department of Agriculture/Oklahoma State University and develop management strategy
14	Remove all non-native plants (Lacebark elm, Siberian elm, Austinian pine, bush honeysuckle, etc.). Replant resulting larger openings with bur oak
15	Adjust drainage such that it flows under trail and not across the top. Plant lowland switchgrass in gully to prevent erosion and screen culvert
16	Relocate overhead power lines to underground along road shoulder
17	Install vehicular gate
18	Determine function of locked four-legged steel structure and remove if no longer needed
19	Remove pedestrian (2) and yield (1) signs when Vanaman Road is demolished
20	Trailside comfort station (stretching area, benches, mister, storm canopy, water fountain, emergency phone)



Plan Implementation Evaluation Areas



Plan Implementation

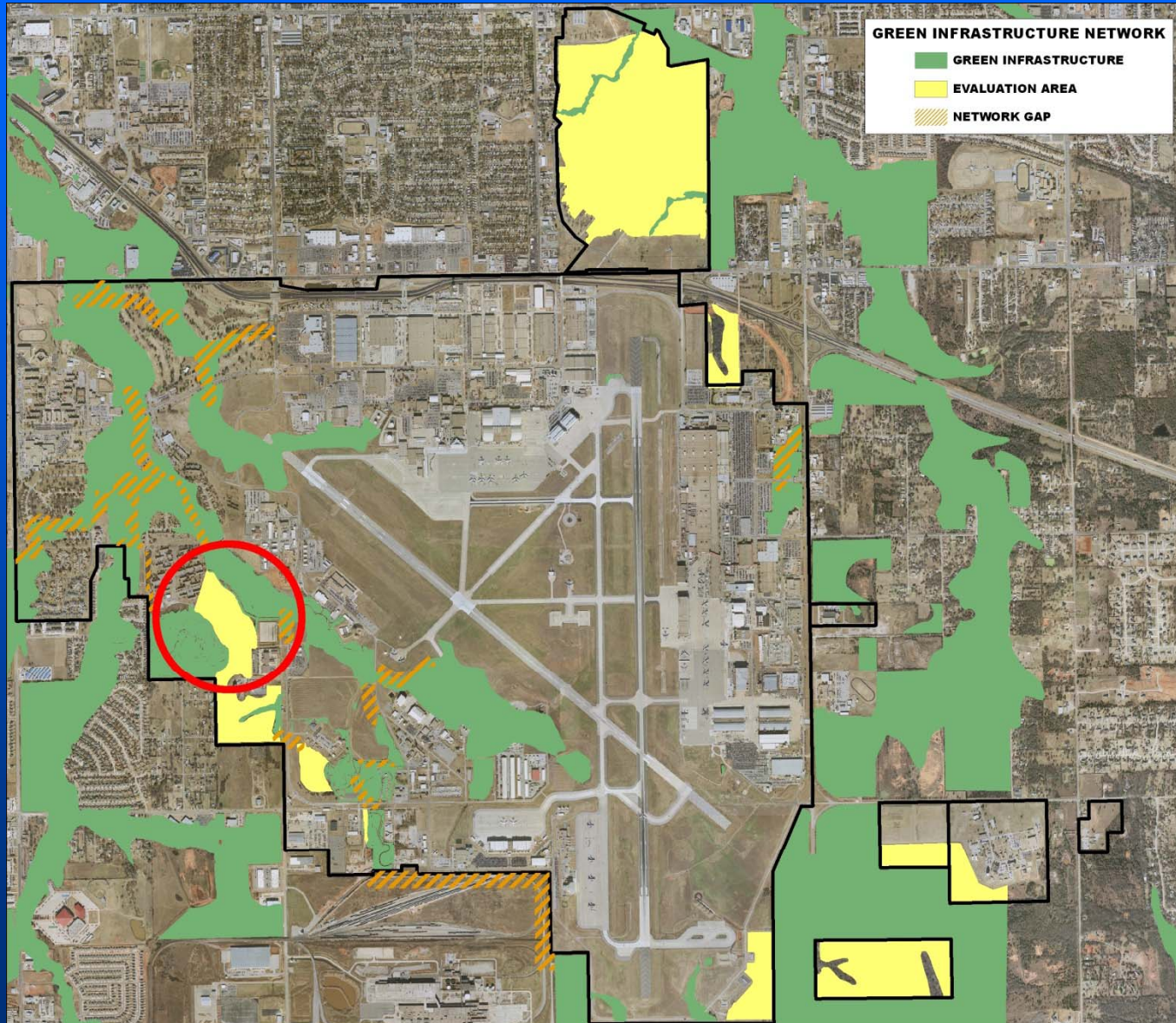
Evaluation Areas



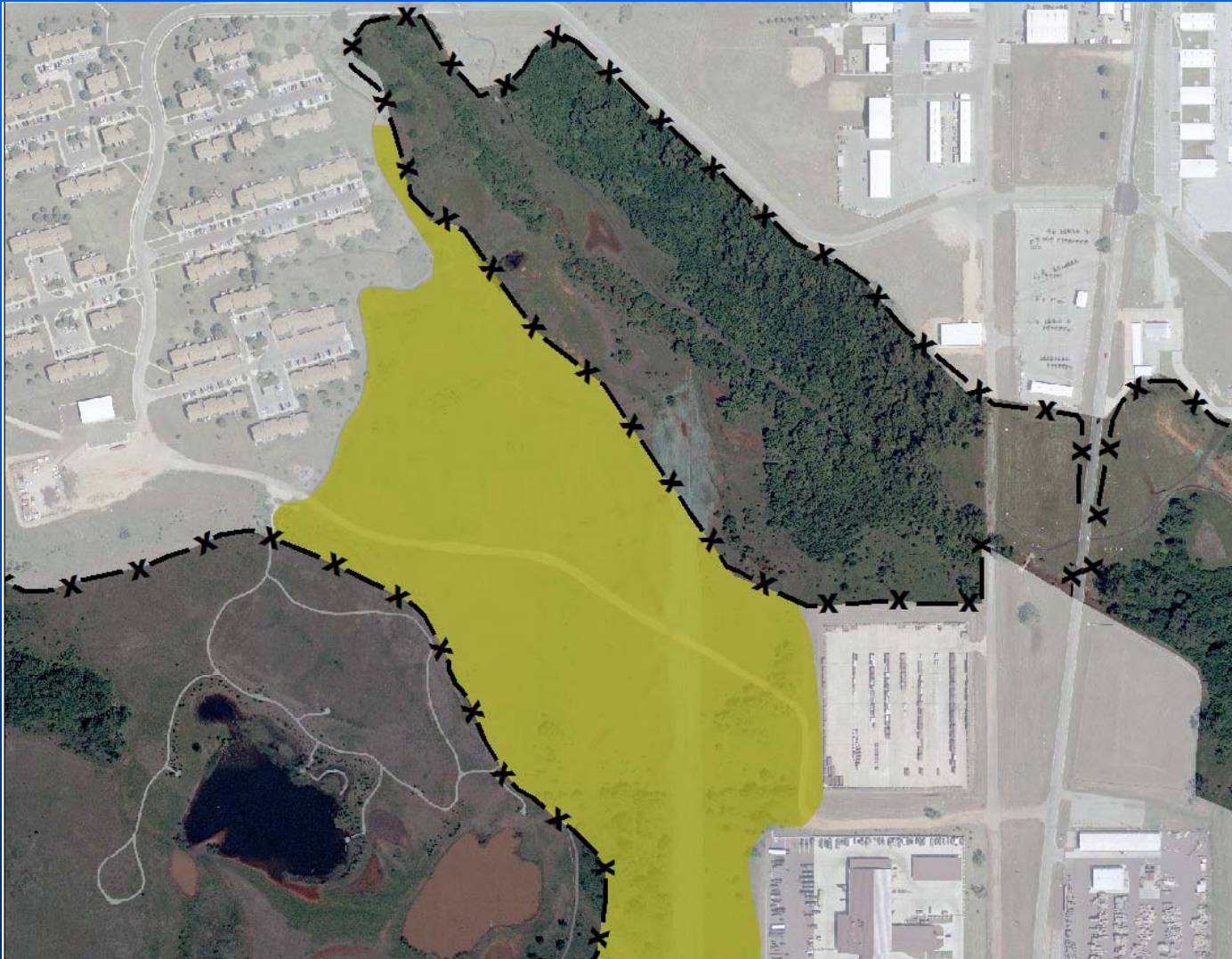
Plan Implementation Evaluation Areas



Plan Implementation Evaluation Areas



Plan Implementation Evaluation Areas



Plan Implementation Evaluation Areas



Plan Implementation Evaluation Areas



Plan Implementation

Evaluation Areas

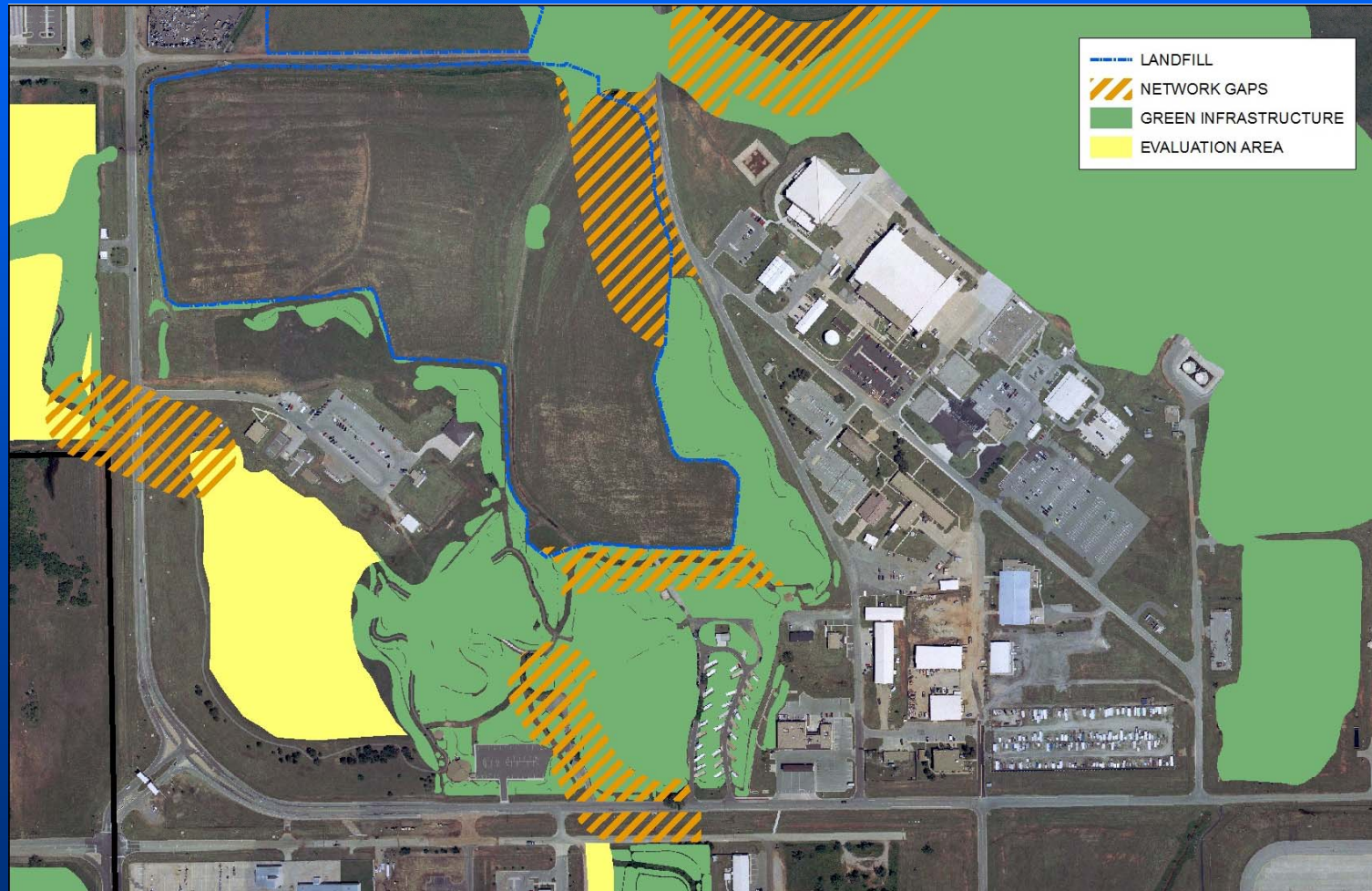


Plan Implementation

Network Gaps



Plan Implementation Network Gaps

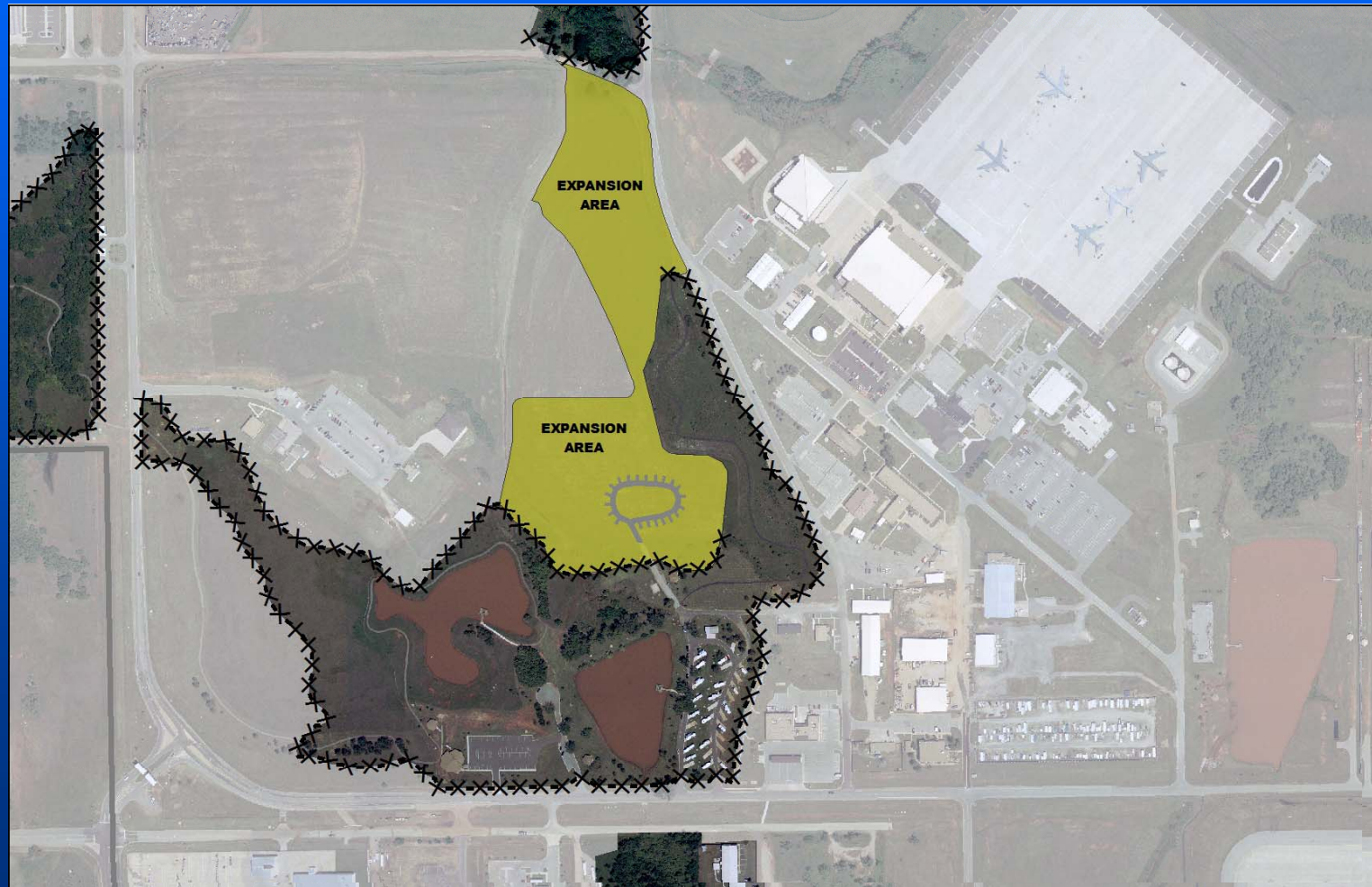


Plan Implementation

Network Gaps



Plan Implementation Network Gaps



Plan Development

Network Gaps

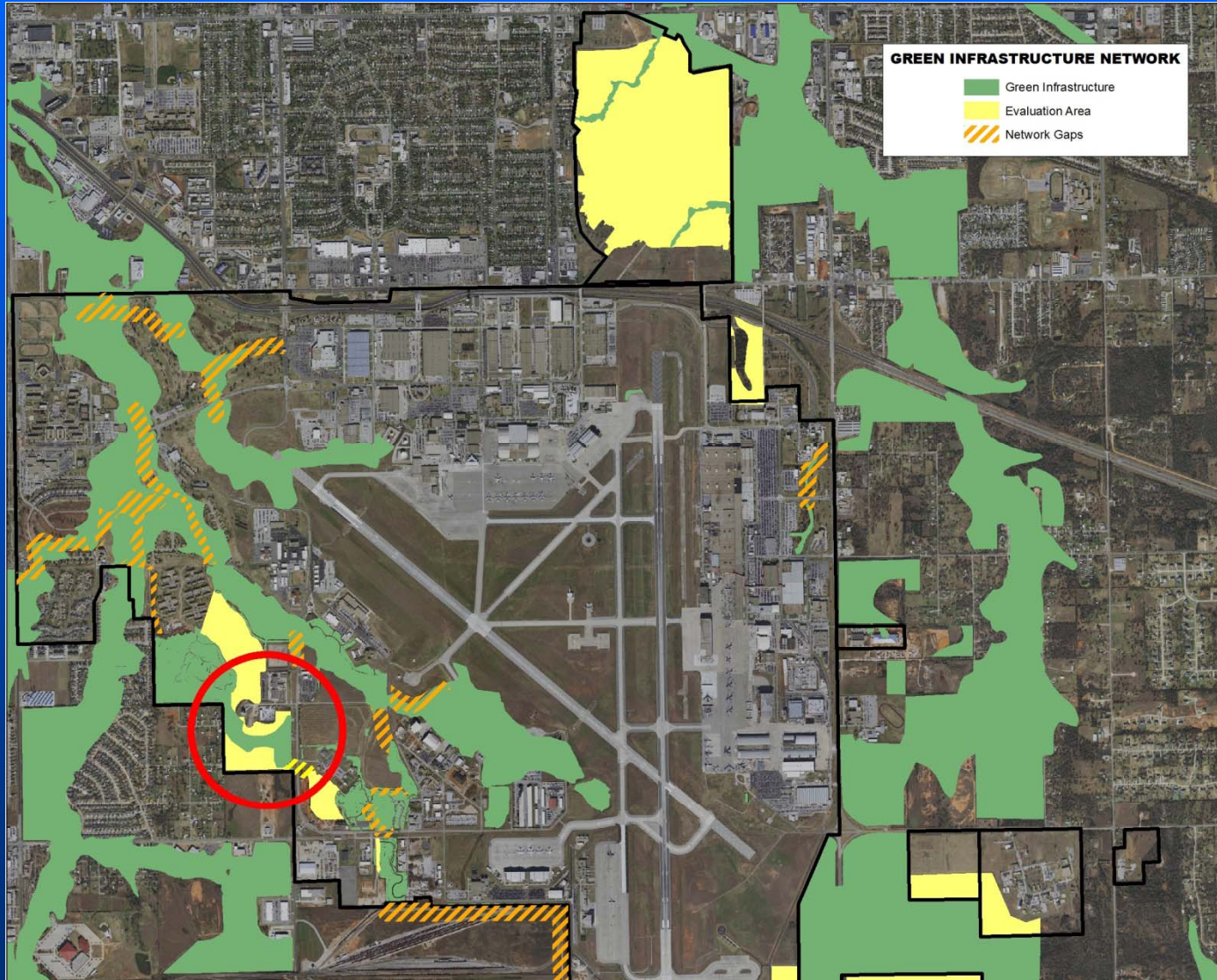


Plan Development Network Gaps



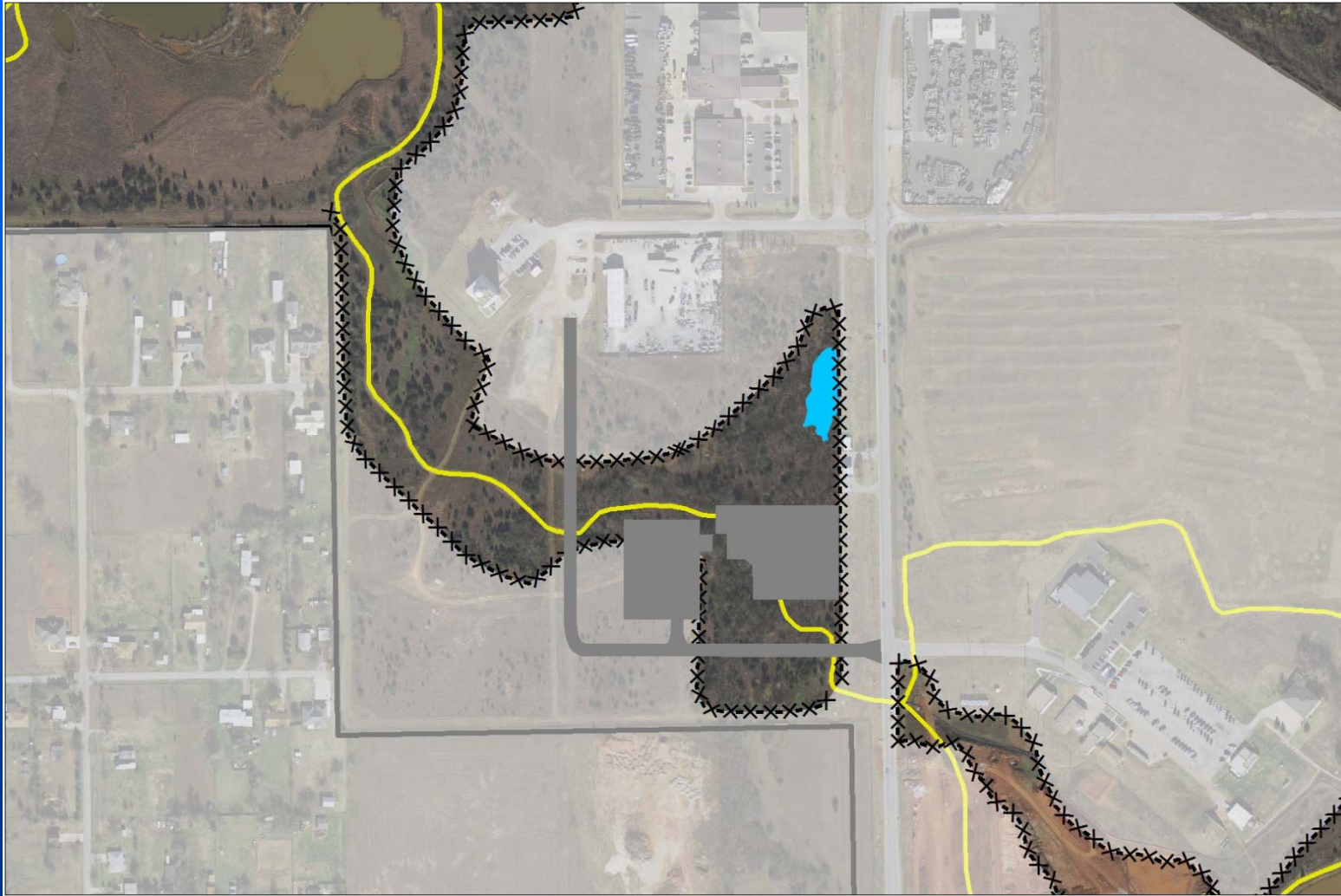
Plan Implementation

Designated Greenspace



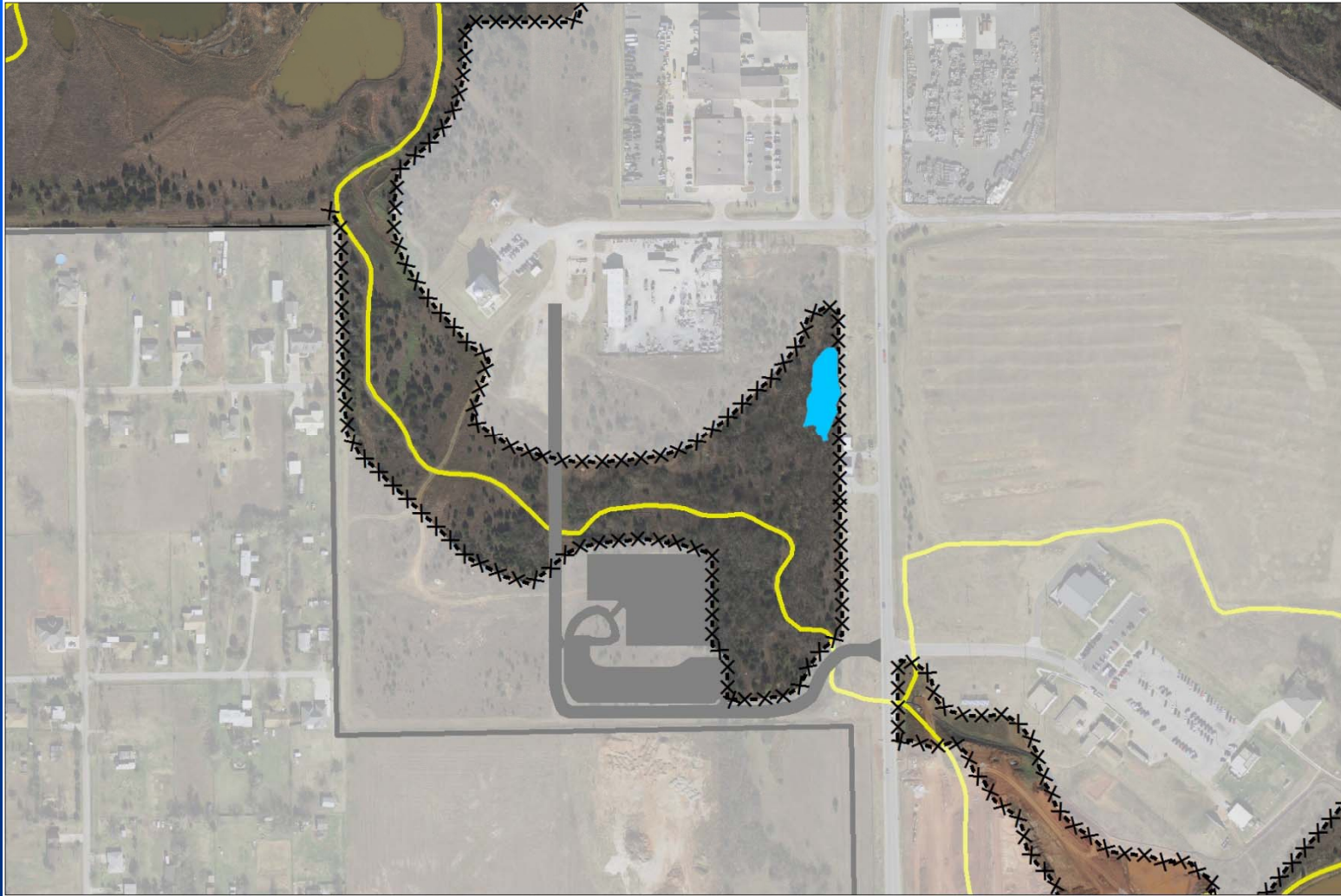
Plan Implementation

Designated Greenspace

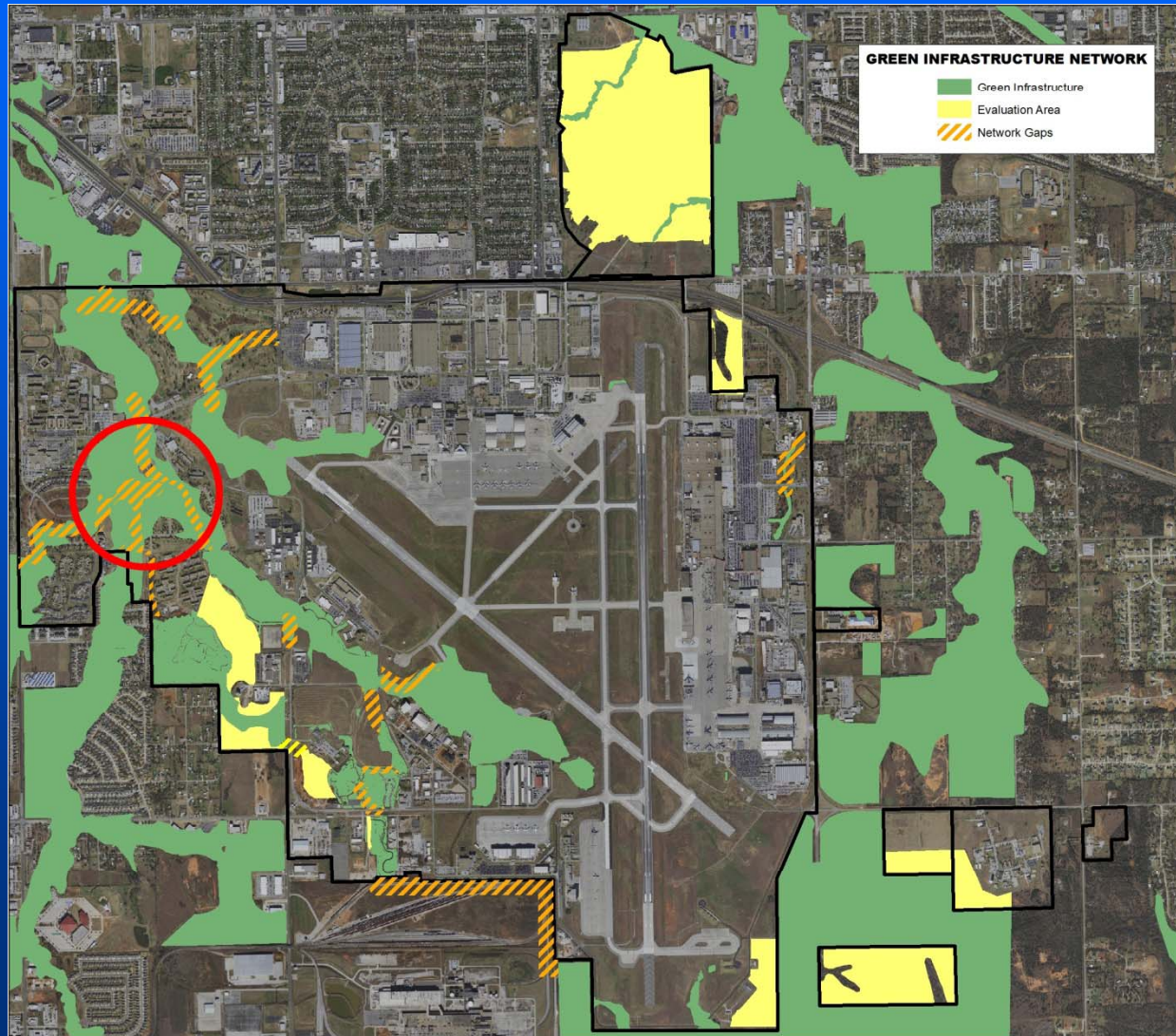


Plan Implementation

Designated Greenspace



Plan Implementation Restoration



Plan Implementation Restoration



Plan Implementation

Restoration



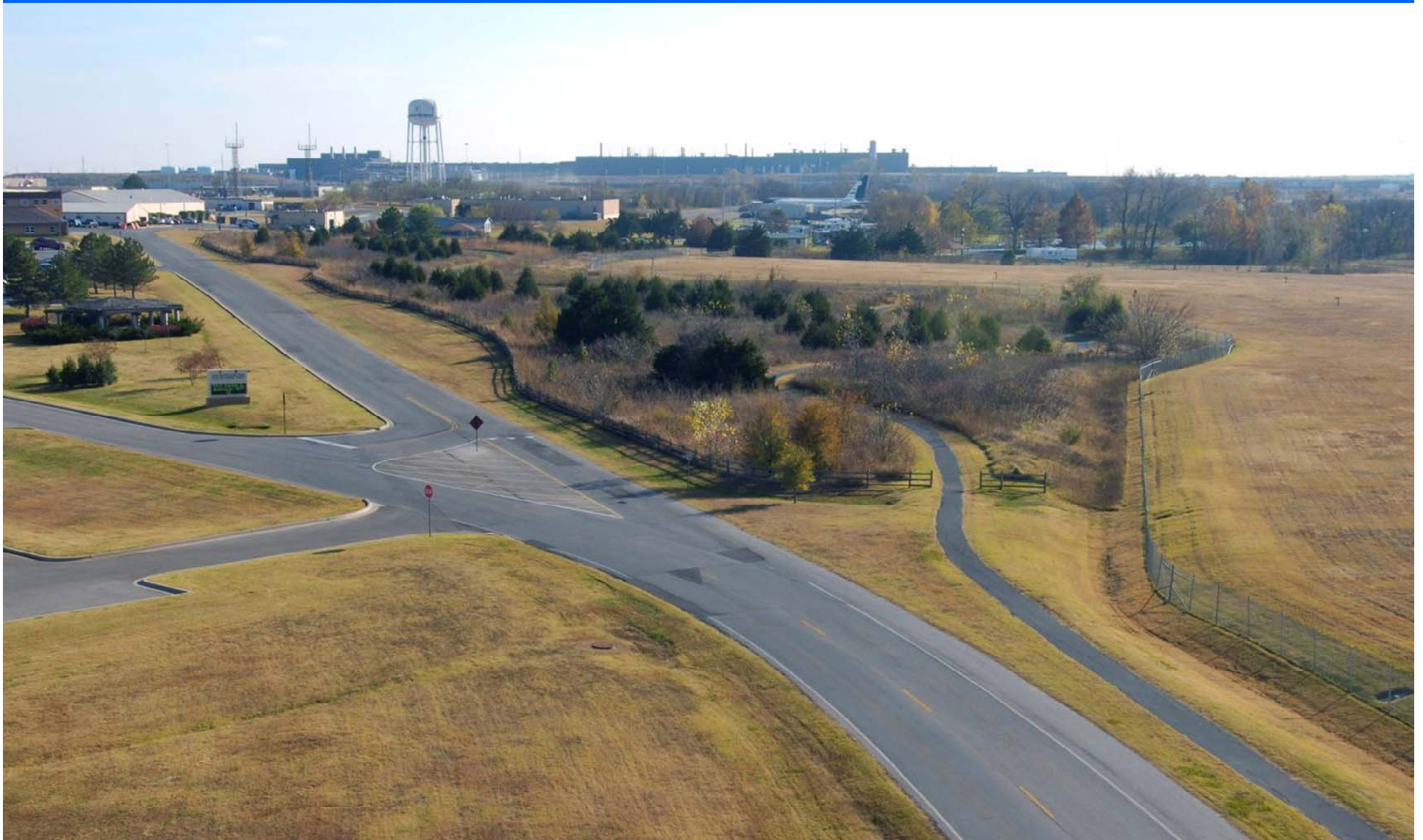
Plan Implementation

Restoration



Plan Implementation

Restoration



Plan Implementation

Restoration



Plan Implementation

Restoration



Plan Implementation

Restoration



Plan Implementation

Restoration



Plan Implementation

Restoration



GI Values/Benefits

Livable Communities



GI Values/Benefits

Military Readiness



GI Values/Benefits

Military Readiness



GI Values/Benefits

Warfighter Health & Wellness



GI Values/Benefits

Stable Wildlife Populations



GI Values/Benefits

Stable Wildlife Populations



GI Values/Benefits

Stable Wildlife Populations



GI Values/Benefits

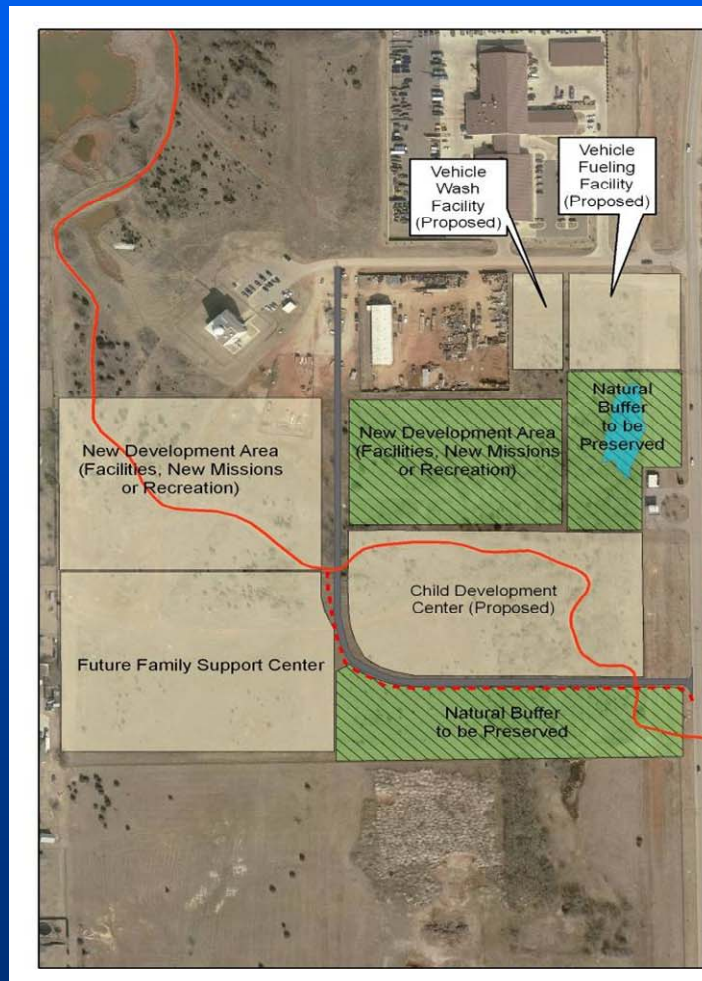
Natural Disaster Preparedness



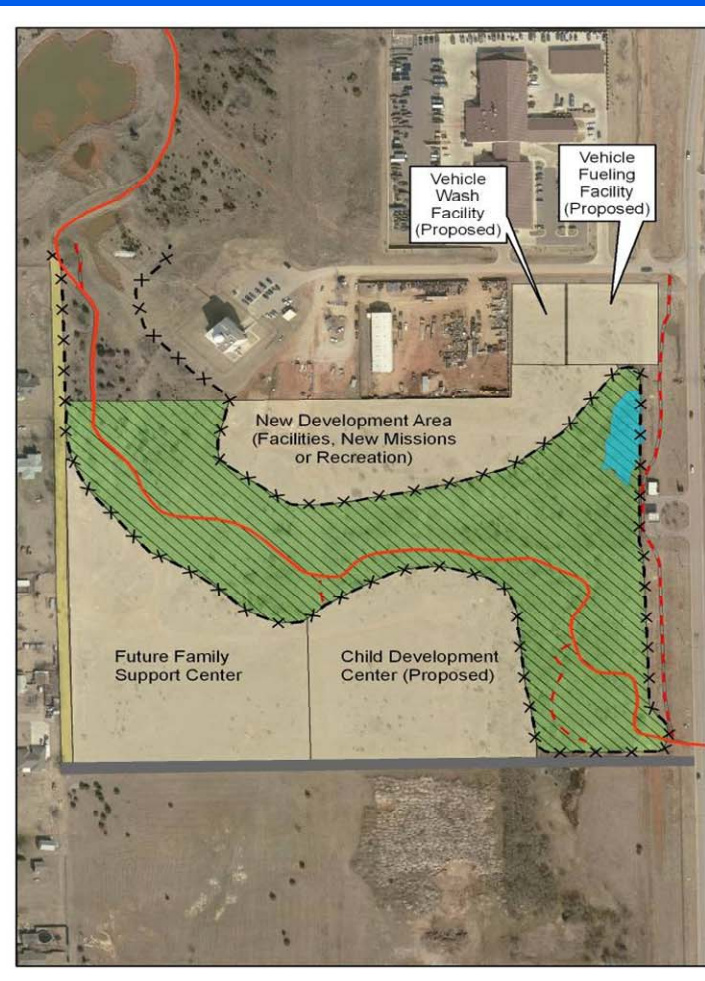
GI Values/Benefits

\$\$ Savings

Customary Planning



GI Planning



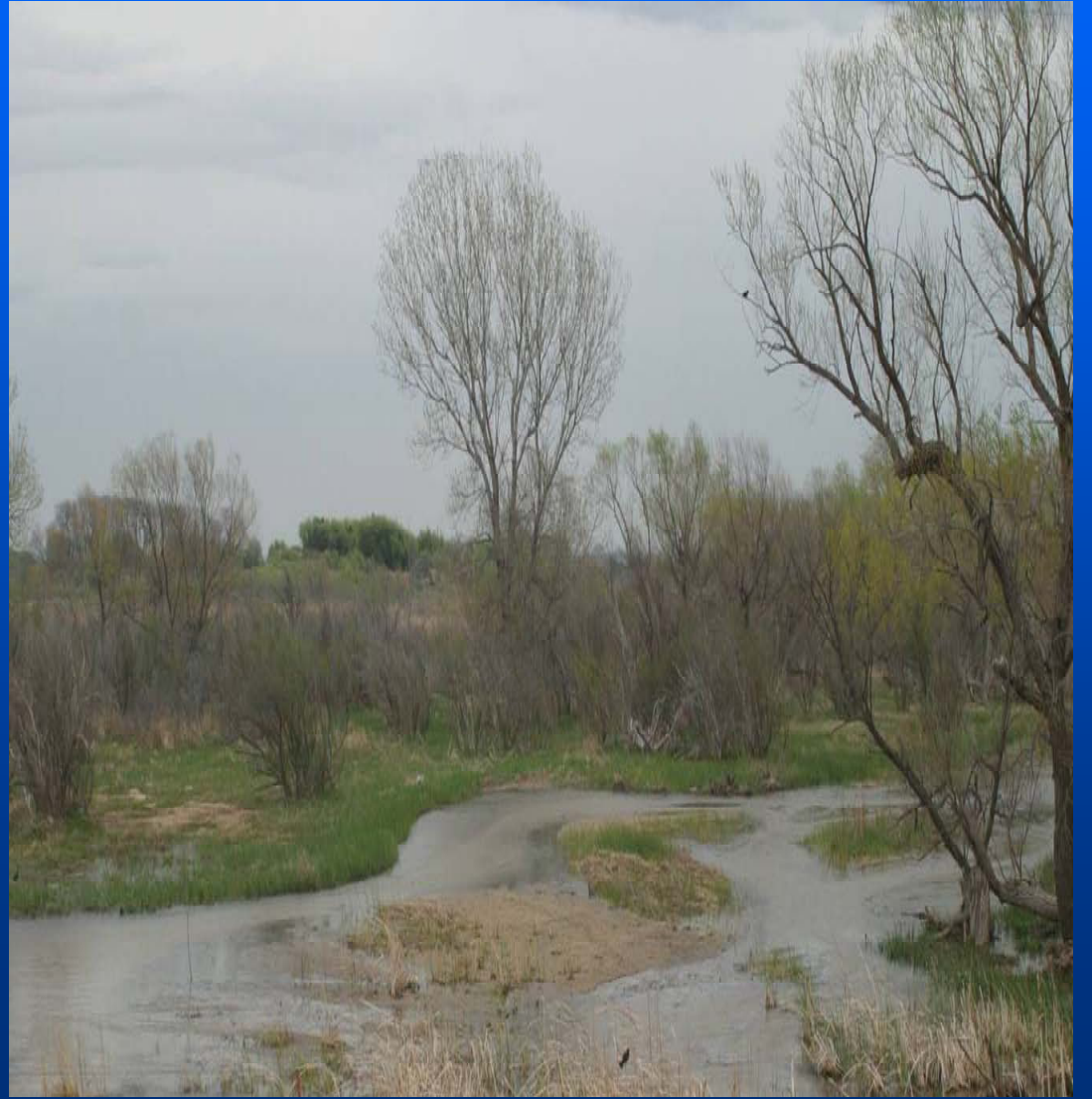
GI Values/Benefits

Urban Sprawl Mitigation



GI Values/Benefits

Water Quality Enhancement



GI Values/Benefits

Quality of Life



